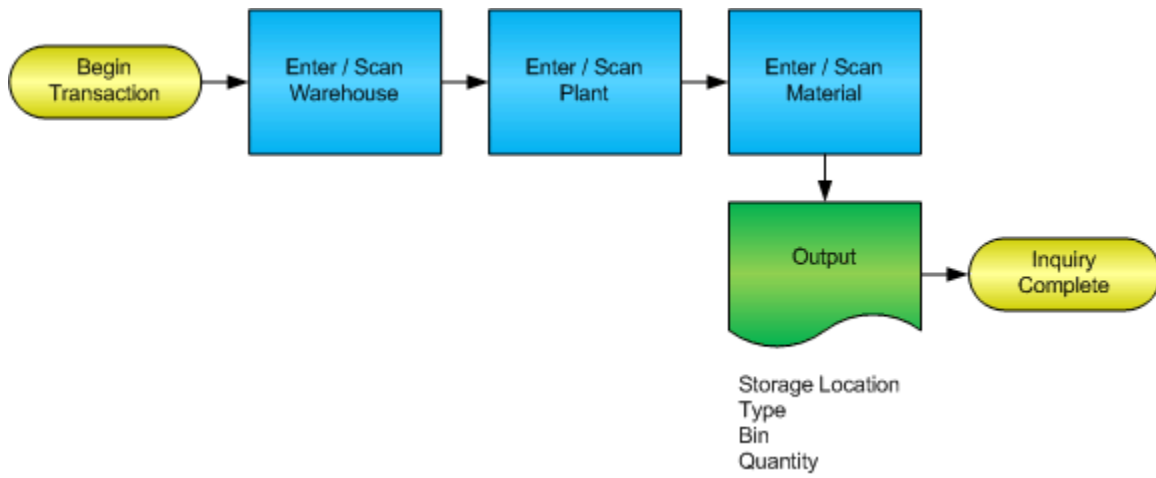


Bin Inquiry by Material



© The DataMAX Software Group Inc
1101 Investment Blvd., Suite 250
El Dorado Hills, CA 95762
(916) 939-4065

SAP® is registered trademark of SAP Corp.® and protected by national and international copyright laws.

License Agreement

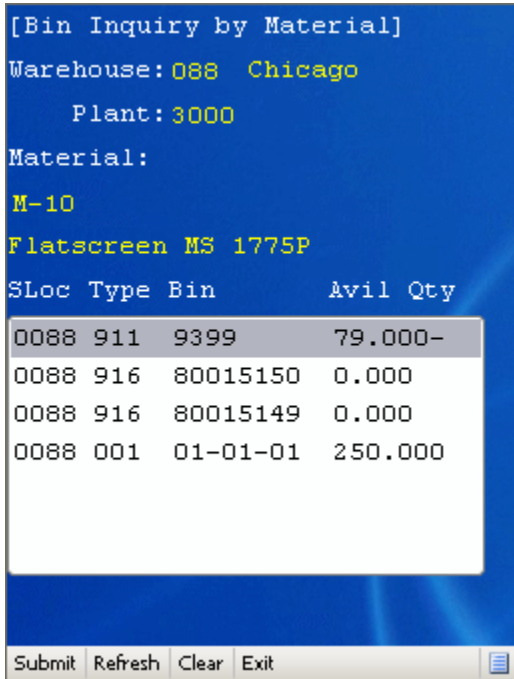
All information contained in this document is **Copyright 2012, the DataMAX Software Group, Inc. and Others, All Rights Are Reserved by DataMAX.** This document may not be published, nor used without the prior written consent of DataMAX. **Use of the RFgen Software 'Open Source' code is at all times subject to the DataMAX Open Source Licensing Agreement,** which must be accepted at the time the source code is installed on your computer system. For your convenience, a text copy of the Open Source Licensing Agreement is also loaded (and may be printed from) your RFgen based system.

Requirements: RFgen Version 3.2.1.5 or later
 RFgen SAP Integration Suite

Table of Contents

- FIMQB200 – BIN INQUIRY BY MATERIAL **2**
 - ✓ VALIDATIONS 2
 - ⇨ FUNCTION KEYS 2
- SAP PROGRAMS - REFERENCE **3**
 - SAP STOCK OVERVIEW: LS26 3
- TEST SCRIPT DESCRIPTION: BIN INQUIRY BY MATERIAL **4**
 - RFGEN INPUT REQUIREMENTS 4
- EXECUTION PROCEDURES **4**
 - OVERALL TEST CASE RESULTS 5

FIMQB200 – Bin Inquiry by Material



This transaction displays bin locations by material with the current quantity on hand.

The following conditions apply to the RFgen implementation for the Bin Inquiry by Material transaction within the SAP environment.

Note: any of these parameters may be easily adjusted to meet the unique requirements of your company.

✓ Validations

Prompt	Method of Validation
Warehouse	T300T table
Plant	T001W table
Material	BAPI_MATERIAL_GETLIST

↔ Function Keys

Key	Function
F3	Exit
F4	Search Data for Current Field
F8	Submit value for the Current Screen Display

SAP Programs - Reference

SAP Stock Overview: LS26

Stock Overview

Other Material		Bin Stock		Units of Measure...		Special Stock...		MM Stock Figures					
Whse Number	600	Richmond IND warehouse											
Material	54	WIRE .020AB SNGL SPOOL DC				Total Quantity:		4,450	LB				
Typ Storage type name													
Plnt	SLoc	S	S	Batch	Re	Available stock	Stock for putaway	Pick quantity					
902 GR Area External Rcpts													
BP06	0001					950	0	0					
BP06	001					2,000	0	0					
* Total		902				2,950	0	0					
914 GI Area Production Orders													
BP06	0001					350	0	0					
BP06	001					1,150	0	0					
* Total		914				1,500	0	0					
** Total						4,450	0	0					

Test Script Description: Bin Inquiry by Material

RFgen Input Requirements

Before you begin testing, ensure, for the combination of warehouse(s), plant(s) and material(s) you will be testing, that the following is setup in SAP.

- a. Warehouse
- b. Plant
- c. Material Number

Execution Procedures

ID	Test Case	Expected Result	Pass	Fail
1	Type in a valid Warehouse _____ Press the ENTER key	RFGEN will validate and accept the warehouse entered		
2	Type in an invalid Warehouse _____ Press the ENTER key	RFGEN will validate and display an error message – the field will continue to error out until corrected		
3	Type in a valid Plant _____ Press the ENTER key	RFGEN will validate and accept the plant entered		
4	Type in an invalid Plant _____ Press the ENTER key	RFGEN will validate and display an error message – the field will continue to error out until corrected		
5	Type in a valid material _____ Press the ENTER key	RFGEN will validate and accept the material entered, and return a list box containing inventory locations by material with the current quantity on hand.		
6	Type in an invalid material _____ Press the ENTER key	RFGEN will validate and display an error message – the field will continue to error out until corrected		
7	Press the “F4” key with the cursor in the Warehouse field	RFGEN will display a list of warehouses		
8	Press the “F4” key with the cursor in the Plant field	RFGEN will display a list of plants		
9	Press the “F4” key with the cursor in the Plant field to select and return a Plant	RFGEN will display a list of plants and when selected, the Plant will be returned		
10	Press the “F4” key with the cursor in the material field	RFGEN will display a list of item numbers		
11	After reviewing the Bin Inquiry by Material display	Confirm the Bin by Material Inquiry results		

Overall Test Case Results

Pass/Fail:	
Tester/Date:	
Re-Tester/Date:	

Actual Results:	
------------------------	--

Comments:	
------------------	--