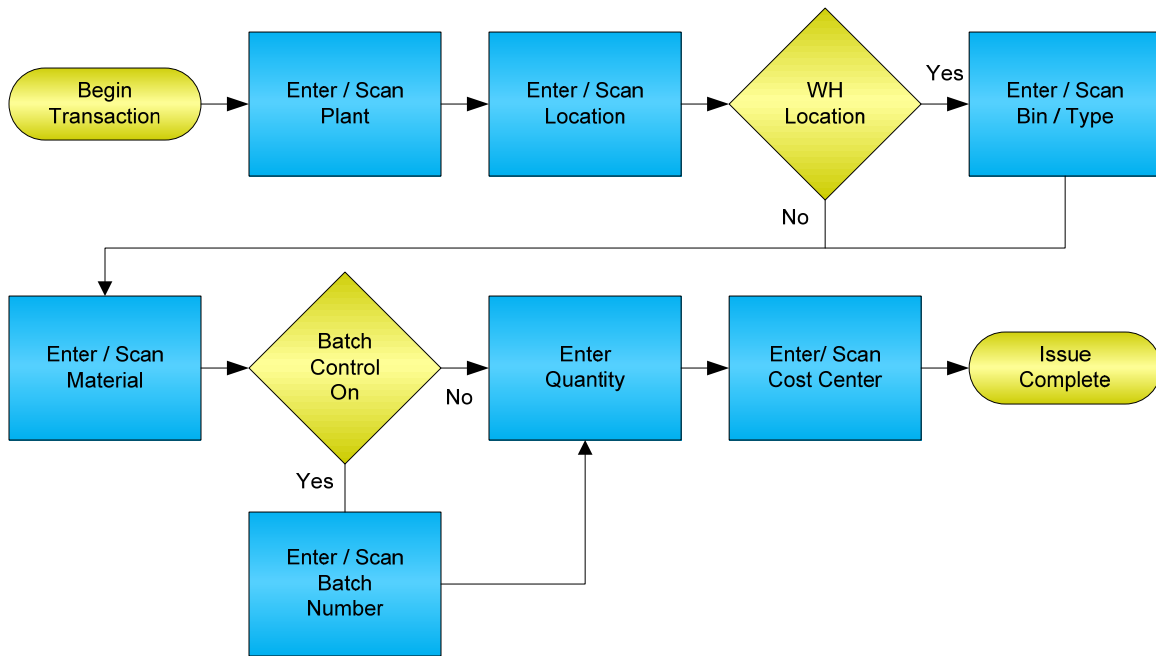


# Goods Issue to Cost Center



© The DataMAX Software Group Inc  
1101 Investment Blvd., Suite 250  
El Dorado Hills, CA 95762  
(916) 939-4065

SAP® is registered trademark of SAP Corp.® and protected by national and international copyright laws.

# License Agreement

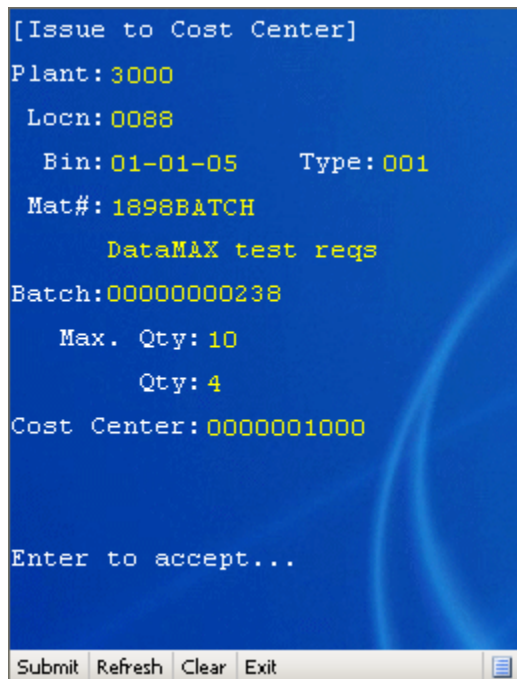
All information contained in this document is **Copyright 2012, the DataMAX Software Group, Inc. and Others, All Rights Are Reserved by DataMAX.** This document may not be published, nor used without the prior written consent of DataMAX. **Use of the RFgen Software 'Open Source' code is at all times subject to the DataMAX Open Source Licensing Agreement,** which must be accepted at the time the source code is installed on your computer system. For your convenience, a text copy of the Open Source Licensing Agreement is also loaded (and may be printed from) your RFgen based system.

Requirements:       RFgen Version 3.2.1.5 or later  
                      RFgen SAP Integration Suite

## TABLE OF CONTENTS

FIMII0200 – GOODS ISSUE TO COST CENTER .....	2
✓ VALIDATIONS .....	2
✓ EDITS .....	2
⇄ FUNCTION KEYS .....	2
CONSIDERATIONS .....	3
SAP PROGRAMS - REFERENCE .....	4
SAP GOODS ISSUE TO COST CENTER: MB1A .....	4
SETUP AN RFGEN MENU .....	5
BASIC TEST SCRIPT .....	6
TEST SCRIPT DESCRIPTION: GOODS ISSUE TO COST CENTER .....	7
RFGEN INPUT REQUIREMENTS .....	7
EXECUTION PROCEDURES.....	7
OVERALL TEST CASE RESULTS .....	9

## FIMII0200 – Goods Issue to Cost Center



This transaction performs an issue to a cost center.

The following conditions apply to the RFgen implementation for the Inventory Goods Issue transaction within the SAP environment. This transaction also supports warehouse locations.

Note: any of these parameters may be easily adjusted to meet the unique requirements of your company.

### ✓ Validations

Prompt	Method of Validation
Plant	T001W table
Location	BAPI_MATERIAL_GETLIST and T001L
Bin	LAGP
Bin Type	LAGP
Material	BAPI_MATERIAL_GETLIST
Batch	BAPI_MATERIAL_GETBATCHES
Quantity	BAPI_MATERIAL_AVAILABILITY and MCHB and MARD
Cost Center	BAPI_COSTCENTER_GETLIST

### ✓ Edits

Condition	Special Circumstance
Default Branch Plant	User Defined
Quantity not greater than Quantity on Hand	
Quantity entered <=0	

### ↔ Function Keys

Key	Function
F3	Exit
F4	Search Data for Current Field
F8	Submit value for the Current Screen Display

## Considerations

1. Will the Plant default in based on user?
2. Are limitations placed on any Inventory Issues such as dollar amounts?
3. Do you use locations, and if so, are there any special circumstances that need to be considered? (i.e. always issue from a particular location?)
4. Is lot control in use?

# SAP Programs - Reference

## SAP Goods Issue to Cost Center: MB1A

The screenshot displays the SAP MB1A 'Enter Goods Issue: Initial Screen'. The interface includes a menu bar with 'Goods issue', 'Edit', 'Goto', 'Movement type', 'Environment', and 'System'. Below the menu is a toolbar with various icons. The main area is titled 'Enter Goods Issue: Initial Screen' and contains several input fields and sections:

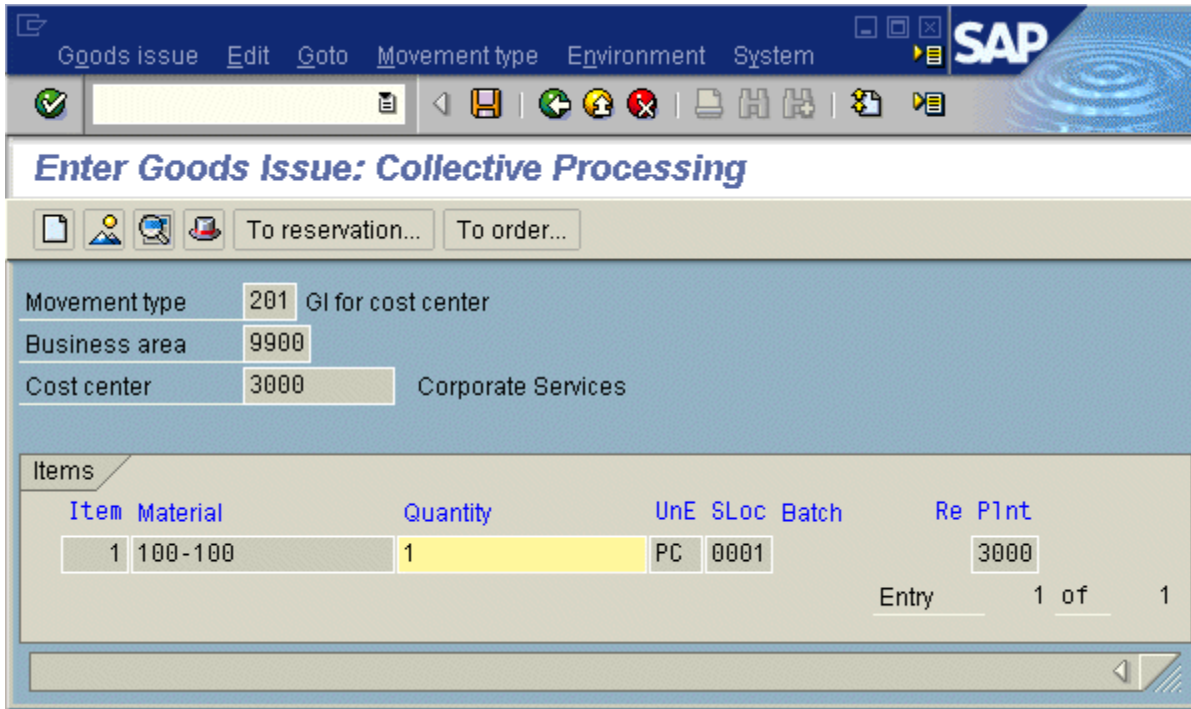
- Document date:** 07/16/2007
- Posting date:** 07/16/2007
- Material slip:** [Empty field]
- Doc.header text:** [Empty field]
- GR/CI slip no.:** [Empty field]

**Defaults for document items:**

- Movement type:** 201
- Plant:** 3000
- Storage location:** [Empty field]
- Special stock:** [Empty field]
- Reason for movement:** [Empty field]
- Suggest zero lines

**GR/CI slip:**

- Print
- Individual slip
- Indiv.slip w.inspect.text
- Collective slip



### Setup an RFgen Menu

To implement an RFgen Form using SAP Movement Types in an RFgen Menu the movement type needs to be specified.

Enter the Form name, followed by a Space. Enter "-TYPE=" and the SAP movement type.

Form/Menu	Description to Display
FIMII0200 -TYPE=201	Issue to Cost Center

## Basic Test Script

1. Record quantities on hand from the Item Ledger for the Plants, Material Numbers and their associated batches and locations for items being issued.
2. Create and document the following scenarios:
  - a. Issue a material not exceeding either material's quantity on hand.
  - b. Attempt to issue the same material.
  - c. If your customization required a limit to be placed on a material to issue such as threshold limits of quantities or dollar amounts, attempt to issue within the criteria. Appropriate errors should appear.
  - d. Attempt to issue a material and using a Cost Center that is not set up for that material.
3. View the results using MMBE and see that the quantity on hand updated to the correct amounts on the processed transactions.

## Test Script Description: Goods Issue to Cost Center

### RFgen Input Requirements

Before you begin testing, ensure, for the combination of branch/plant(s) and material(s) you will be testing, that the following is setup in SAP.

- a. Material
- b. Batch
- c. Quantity On Hand
- d. Quantity Available

### Execution Procedures

ID	Test Case	Expected Result	Pass	Fail
1	Type in a valid Plant _____ Press the <b>ENTER</b> key	RFGEN will validate and accept the plant entered.		
2	Type in a valid location _____ Press the <b>ENTER</b> key	RFGEN will validate and accept the location entered.		
3	Type in a valid Bin _____ Press the <b>ENTER</b> key	RFGEN will validate and accept the Bin as well as display the unique Bin Type. If there are more than one Bin Type, the user is prompted for the Bin Type		
4	Type in a valid material _____ Press the <b>ENTER</b> key	RFGEN will validate and accept the material entered.		
5	Type in a valid Batch _____ Press the <b>ENTER</b> key	RFGEN will validate and accept the Batch entered.		
6	Type in a valid Qty _____ Press the <b>ENTER</b> key	RFGEN will validate and accept the quantity entered.		
7	Type in a valid Cost Center _____ Press the <b>ENTER</b> key	RFGEN will validate and accept the Cost Center entered.		
8	Type in an invalid Plant _____ Press the <b>ENTER</b> key	RFGEN will validate the plant entered and display an error message – the field will continue to error out until corrected		
9	Type in an invalid location _____ Press the <b>ENTER</b> key	RFGEN will validate and display an error message – the field will continue to error out until corrected		
10	Type in an invalid Bin _____ Press the <b>ENTER</b> key	RFGEN will validate and display an error message – the field will continue to error out until corrected		
11	Type in an invalid material _____ Press the <b>ENTER</b> key	RFGEN will validate and display an error message – the field will continue to error out until corrected		

12	Type in a invalid Batch _____ Press the <b>ENTER</b> key	RFGEN will validate and display an error message – the field will continue to error out until corrected		
13	Type in a invalid Qty _____ Press the <b>ENTER</b> key	RFGEN will validate and display an error message – the field will continue to error out until corrected		
14	Type in a invalid Cost Center _____ Press the <b>ENTER</b> key	RFGEN will validate and display an error message – the field will continue to error out until corrected		
15	At the RFGEN “Enter to Accept Prompt” the transaction is added to SAP.	Confirm the Issue to Cost Center results		

Overall Test Case Results

<b>Pass/Fail:</b>	
<b>Tester/Date:</b>	
<b>Re-Tester/Date:</b>	

<b>Actual Results:</b>	
------------------------	--

<b>Comments:</b>	
------------------	--