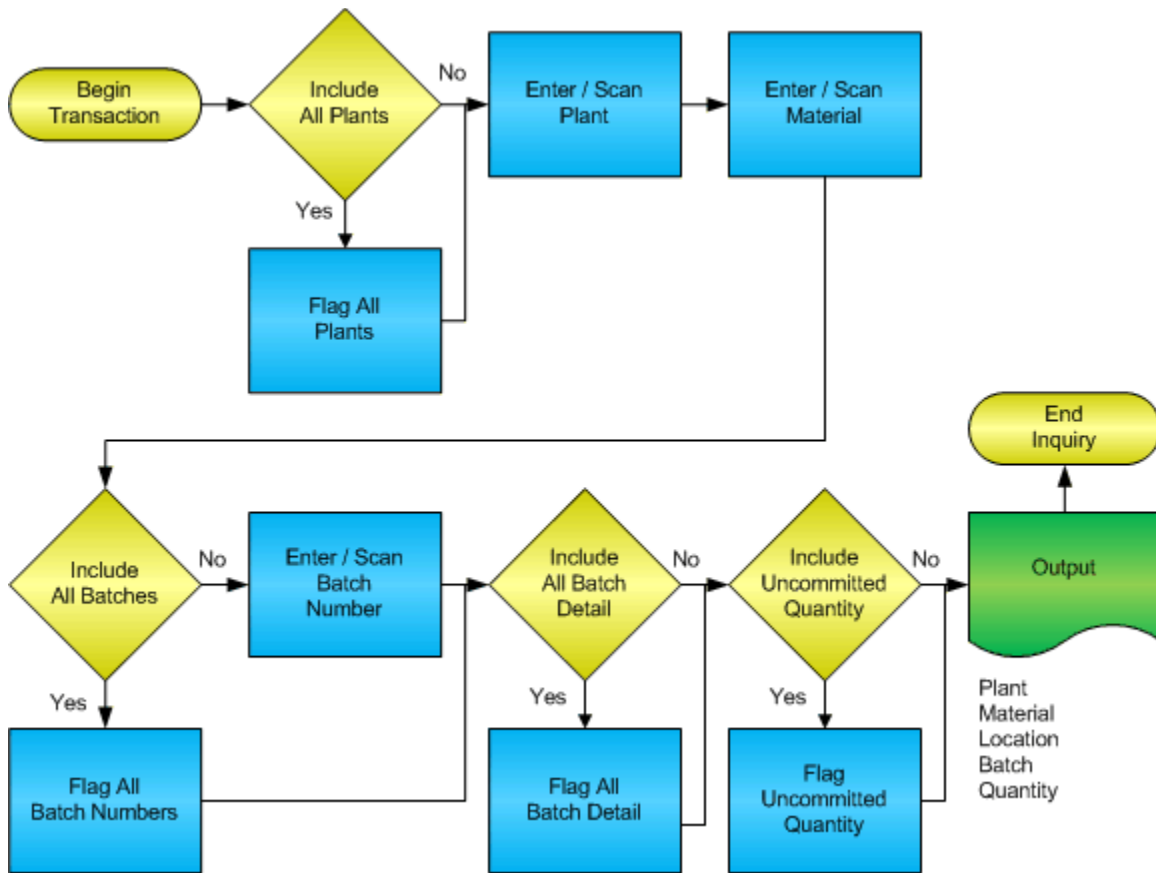


Location Inquiry by Material



© The DataMAX Software Group Inc
1101 Investment Blvd., Suite 250
El Dorado Hills, CA 95762
(916) 939-4065

SAP® is registered trademark of SAP Corp.® and protected by national and international copyright laws.

License Agreement

All information contained in this document is **Copyright 2012, the DataMAX Software Group, Inc. and Others, All Rights Are Reserved by DataMAX.** This document may not be published, nor used without the prior written consent of DataMAX. **Use of the RFgen Software 'Open Source' code is at all times subject to the DataMAX Open Source Licensing Agreement,** which must be accepted at the time the source code is installed on your computer system. For your convenience, a text copy of the Open Source Licensing Agreement is also loaded (and may be printed from) your RFgen based system.

Requirements: RFgen Version 3.2.1.5 or later
 RFgen SAP Integration Suite

Table of Contents

- FIMQI200 – LOCATION INQUIRY BY MATERIAL..... **2**
 - ✓ VALIDATIONS 2
 - ⇨ FUNCTION KEYS 2
- SAP PROGRAMS - REFERENCE **3**
 - SAP STOCK OVERVIEW: MMBE..... 3
- TEST SCRIPT DESCRIPTION: LOCATION INQUIRY BY MATERIAL **4**
 - RFGEN INPUT REQUIREMENTS 4
- EXECUTION PROCEDURES **4**
 - OVERALL TEST CASE RESULTS 5

FIMQI200 – Location Inquiry by Material

[Location Inquiry By Mat]
 Show All Plnt Bat Avail

 Plant: 3000
 Mat#: 100-100
 Hot Rod Handle Bars
 Batch: SW56

Locn	Quantity
0001	1990
0002	1110
0088	75

Submit Refresh Clear Exit

This transaction displays inventory locations by material with the current quantity on hand. If the material is batch controlled, entering the quantity will reflect that batch's on hand quantity.

If Avail is checked, the quantities will adjust to show all quantity on hand with the exception of those materials that are soft or hard committed.

The following conditions apply to the RFgen implementation for the Location Inquiry by Material transaction within the SAP environment.

Note: any of these parameters may be easily adjusted to meet the unique requirements of your company.

✓ Validations

Prompt	Method of Validation
Plant	T001W table
Material	BAPI_MATERIAL_GETLIST
Batch	BAPI_MATERIAL_GETBATCHES

↔ Function Keys

Key	Function
F3	Exit
F4	Search Data for Current Field
F8	Submit value for the Current Screen Display

SAP Programs - Reference

SAP Stock Overview: MMBE

The screenshot displays the SAP Stock Overview (MMBE) window. At the top, there is a menu bar with options: List, Edit, Goto, Extras, Environment, System, and Help. Below the menu is a toolbar with various icons for navigation and actions. The main title of the window is "Stock Overview: Company Code/Plant/Storage Location/Batch".

Material details are shown as follows:

- Material: 1898 HD Brake system
- Material type: ROH Raw material
- Unit of measure: PC Base unit of measure: PC

The main data is presented in a table with the following structure:

CI/CC/Plant/SLoc/Batch D	Unrestricted use	Qual. inspection	Reserved
Total	67.321	27.000	0.000
3000 IDES US INC	67.321	27.000	0.000
3000 New York	67.321	27.000	0.000
0001 Warehouse 0001	57.321	27.000	0.000

Test Script Description: Location Inquiry by Material

RFgen Input Requirements

Before you begin testing, ensure, for the combination of plant(s) and material(s) you will be testing, that the following is setup in SAP.

- a. Plant
- b. Material Number
- c. Batch

Execution Procedures

ID	Test Case	Expected Result	Pass	Fail
1	Type in a valid Plant _____ Press the ENTER key	RFGEN will validate and accept the plant entered		
2	Type in a valid material _____ Press the ENTER key	RFGEN will validate and accept the material entered, and return a list box containing inventory locations by material with the current quantity on hand.		
3	Type in an invalid Plant _____ Press the ENTER key	RFGEN will validate and display an error message – the field will continue to error out until corrected		
4	Type in an invalid material _____ Press the ENTER key	RFGEN will validate and display an error message – the field will continue to error out until corrected		
5	Press the “F4” key with the cursor in the Plant field	RFGEN will display a list of plants		
6	Press the “F4” key with the cursor in the Plant field to select and return a Plant	RFGEN will display a list of plants and when selected, the Plant will be returned		
7	Press the “F4” key with the cursor in the material field	RFGEN will display a list of item numbers		
8	If the show all ‘Plnt’ box is checked	RFGEN will display inventory locations by material with the current quantity on hand for all plants		
9	If the show all ‘Bat’ box is checked	RFGEN will display inventory locations by material with the current quantity on hand for all batches		
10	If the show all ‘Detl’ box is checked	RFGEN will display inventory locations by material with the current quantity on hand for all batches and the batch detail		
11	If the show all ‘Avail’ box is checked	RFGEN will display inventory locations by material where the quantities will adjust to		

		show all on hand with the exception of those material that are soft or hard committed		
12	After reviewing the Location Inquiry by Material display	Confirm the Location by Item Inquiry results		

Overall Test Case Results

Pass/Fail:	
Tester/Date:	
Re-Tester/Date:	

Actual Results:	
------------------------	--

Comments:	
------------------	--