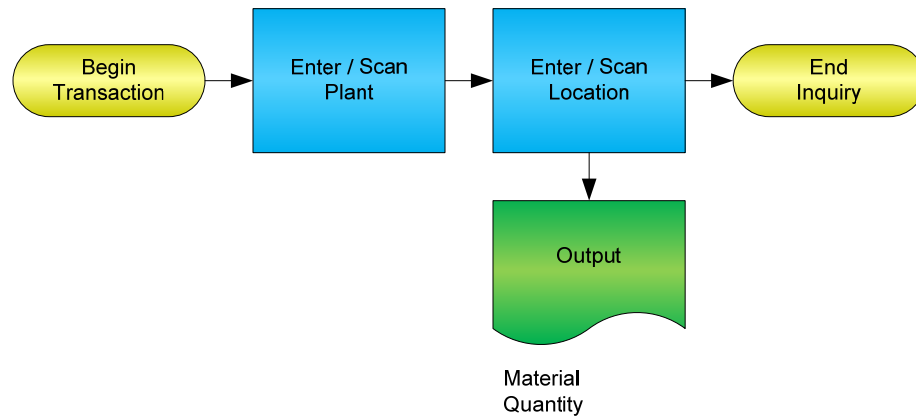


Material Inquiry by Location



© The DataMAX Software Group Inc
1101 Investment Blvd., Suite 250
El Dorado Hills, CA 95762
(916) 939-4065

SAP® is registered trademark of SAP Corp.® and protected by national and international copyright laws.

License Agreement

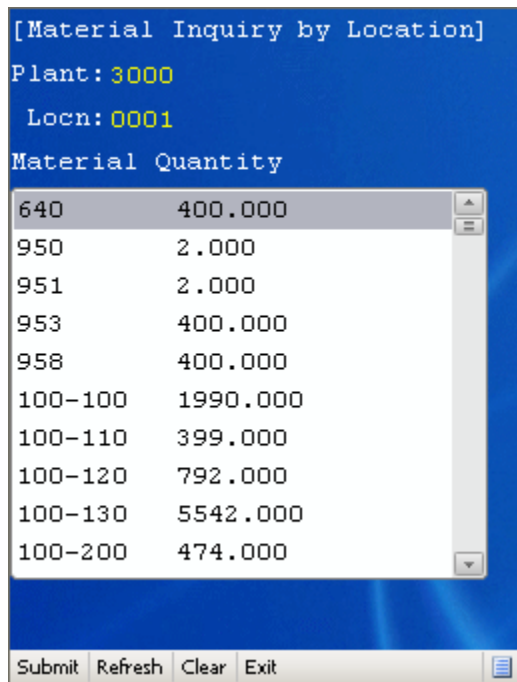
All information contained in this document is **Copyright 2012, the DataMAX Software Group, Inc. and Others, All Rights Are Reserved by DataMAX.** This document may not be published, nor used without the prior written consent of DataMAX. **Use of the RFgen Software 'Open Source' code is at all times subject to the DataMAX Open Source Licensing Agreement,** which must be accepted at the time the source code is installed on your computer system. For your convenience, a text copy of the Open Source Licensing Agreement is also loaded (and may be printed from) your RFgen based system.

Requirements: RFgen Version 3.2.1.5 or later
 RFgen SAP Integration Suite

Table of Contents

- FIMQL0200 – MATERIAL INQUIRY BY LOCATION **2**
 - ✓ VALIDATIONS 2
 - ⇨ FUNCTION KEYS 2
- SAP PROGRAMS - REFERENCE **3**
 - SAP STOCK OVERVIEW: MMBE 3
- TEST SCRIPT DESCRIPTION: MATERIAL INQUIRY BY LOCATION **4**
 - RFGEN INPUT REQUIREMENTS 4
- EXECUTION PROCEDURES **4**
 - OVERALL TEST CASE RESULTS 5

FIMQL0200 – Material Inquiry by Location



This transaction displays inventory materials by location with the current quantity on hand.

The following conditions apply to the RFgen implementation of the Material Inquiry by Location transaction within the SAP environment.

Note: any of these parameters may be easily adjusted to meet the unique requirements of your company.

✓ Validations

Prompt	Method of Validation
Plant	T001W
Location	T001L

⇨ Function Keys

Key	Function
F3	Exit
F4	Search Data for Current Field
F8	Submit value for the Current Screen Display

SAP Programs - Reference

SAP Stock Overview: MMBE



Notice that SAP cannot perform this function.

Test Script Description: Material Inquiry by Location

RFgen Input Requirements

Before you begin testing, ensure, for the combination of plant(s) and material(s) you will be testing, that the following is setup in SAP.

- a. Plant
- b. Location

Execution Procedures

ID	Test Case	Expected Result	Pass	Fail
1	Type in a valid Plant _____ Press the ENTER key	RFGEN will validate and accept the plant entered		
2	Type in a valid location _____ Press the ENTER key	RFGEN will validate and accept the location entered, and return a list box containing materials by location with the current quantity on hand.		
3	Type in an invalid Plant _____ Press the ENTER key	RFGEN will validate and display an error message – the field will continue to error out until corrected		
4	Press the “F4” key with the cursor in the Plant field	RFGEN will display a list of plants		
5	Press the “F4” key with the cursor in the Plant field to select and return an Plant	RFGEN will display a list of plants and when selected, the Plant will be returned		
6	After reviewing the Inquiry by Location display, press Enter	Confirm the Inquiry by Location results		

Overall Test Case Results

Pass/Fail:	
Tester/Date:	
Re-Tester/Date:	

Actual Results:	
------------------------	--

Comments:	
------------------	--