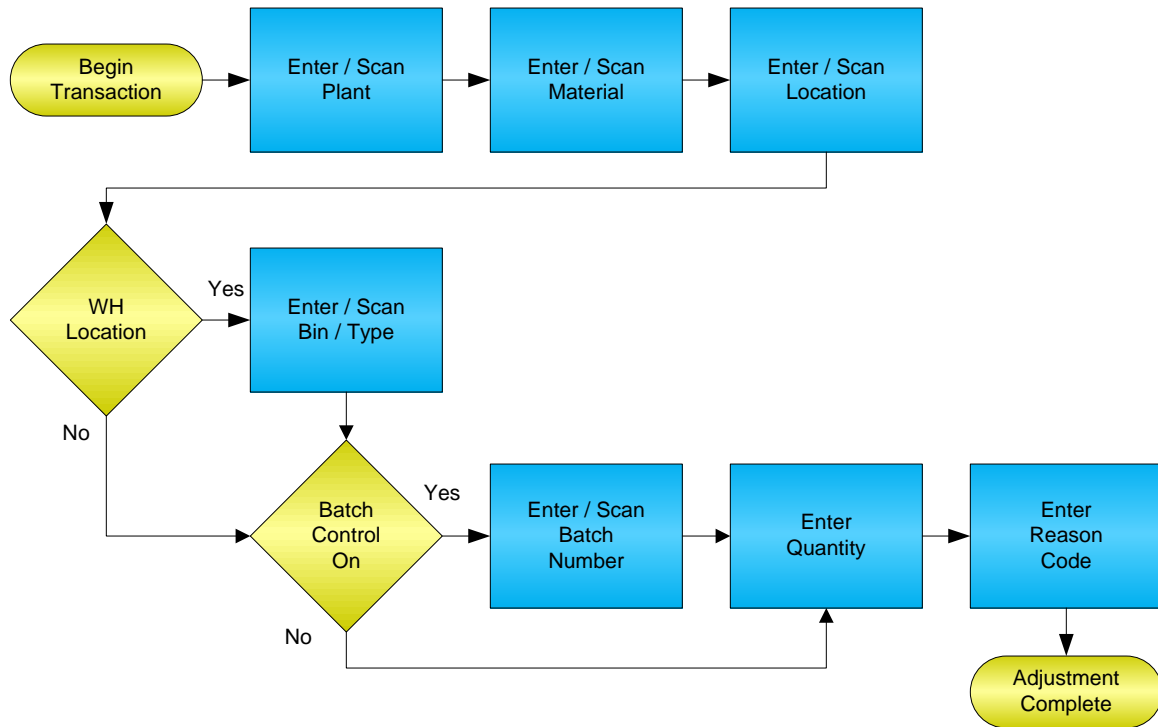


Inventory Negative Adjustment



© The DataMAX Software Group Inc
1101 Investment Blvd., Suite 250
El Dorado Hills, CA 95762
(916) 939-4065

SAP® is registered trademark of SAP Corp.® and protected by national and international copyright laws.

License Agreement

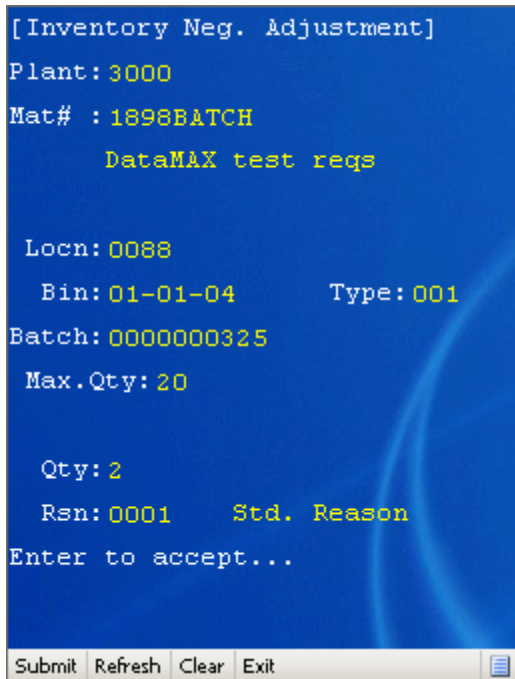
All information contained in this document is **Copyright 2012, the DataMAX Software Group, Inc. and Others, All Rights Are Reserved by DataMAX.** This document may not be published, nor used without the prior written consent of DataMAX. **Use of the RFgen Software 'Open Source' code is at all times subject to the DataMAX Open Source Licensing Agreement,** which must be accepted at the time the source code is installed on your computer system. For your convenience, a text copy of the Open Source Licensing Agreement is also loaded (and may be printed from) your RFgen based system.

Requirements: RFgen Version 3.2.0.44 or later
 RFgen SAP Integration Suite

TABLE OF CONTENTS

- FIMIA0200 – INVENTORY NEGATIVE ADJUSTMENT 2**
 - ✓ VALIDATIONS 2
 - ✓ EDITS 2
 - ⇨ FUNCTION KEYS 2
 - CONSIDERATIONS 3
- SAP PROGRAMS - REFERENCE 4**
 - SAP INVENTORY ADJUSTMENTS: MB1C 4
 - SETUP AN RFGEN MENU 4
- BASIC TEST SCRIPT 5**
- TEST SCRIPT DESCRIPTION: INVENTORY NEGATIVE ADJUSTMENT 6**
 - RFGEN INPUT REQUIREMENTS 6
 - EXECUTION PROCEDURES..... 6
 - OVERALL TEST CASE RESULTS 8

FIMIA0200 – Inventory Negative Adjustment



This transaction decreases inventory. An Inventory Adjustment record is recorded and the results can be seen in the MMBE screen for the given material. This transaction also supports warehouse locations.

The following conditions apply to the RFgen implementation for the Inventory Adjustment transaction within the SAP environment.

Note: any of these parameters may be easily adjusted to meet the unique requirements of your company.

✓ Validations

Prompt	Method of Validation
Plant	T001W
Material	BAPI_MATERIAL_GETLIST
Batch	BAPI_MATERIAL_GETBATCHES
Location	BAPI_MATERIAL_GETLIST
Bin	LAGP
Bin Type	LAGP
Quantity	BAPI_MATERIAL_AVAILABILITY
Reason	T157E

✓ Edits

Condition	Special Circumstance
Default Branch Plant	User defined
Quantity not greater than Quantity on Hand	
Quantity entered <=0	

⇌ Function Keys

Key	Function
F3	Exit
F4	Search Data for Current Field
F8	Submit value for the Current Screen Display

Considerations

1. Do you want the Plant to default based on user?
2. Will you allow transactions on negative quantities to increase inventory?
3. Do you need limitations placed on the dollar amount of Inventory Adjustments?
4. Do you use lot control?

SAP Programs - Reference

SAP Inventory Adjustments: MB1C

Other goods receipts Edit Goto Movement type Environment System

Enter Other Goods Receipts: Collective Processing

To reservation... To order... To purchase order...

Movement type GI entry of st. bals

Item	Material	Quantity	UnE	SLoc	Batch	Re PInt
1	1898	10	PC	0001		3000
2				0001		3000
3				0001		3000

Entry 1 of 1

Setup an RFgen Menu

To implement an RFgen Form using SAP Movement Types in an RFgen Menu the movement type needs to be specified.

Enter the Form name, followed by a Space. Enter "-TYPE=" and the movement type.

Form/Menu	Description to Display
FIMIA0200 -TYPE=NEG	Negative Adjustment

Basic Test Script

1. Record quantities on hand from for the Plant, Material and their associated batches and locations that you will perform Inventory Adjustments on.
2. Create and document the following scenarios:
 - a. Adjust an amount within the quantity on hand for a material
 - b. Adjust a negative amount for a material. Based upon your specifications, if not allowed, a negative issue warning should appear. If negative adjustments are allowed, inventory should increase.
 - c. Attempt to adjust on materials that are not set up in particular plants.
 - d. Attempt to adjust a material not set up in a particular location. A "Plant or Location error" should appear.
 - e. If your customization required an adjustment quantity threshold be placed on a material, attempt to adjust over the quantity amount authorized for a particular material. An "exceeding threshold limit" error should appear.
3. View the results using MMBE and see that the quantity on hand updated to the correct amounts on the processed transactions.

Test Script Description: Inventory Negative Adjustment

RFgen Input Requirements

Before you begin testing, ensure, for the combination of plant(s) and material(s) you will be testing, that the following is setup in SAP.

- a. Material
- b. Quantity On Hand
- c. Quantity Available

Execution Procedures

ID	Test Case	Expected Result	Pass	Fail
1	Type in a valid Plant _____ Press the ENTER key	RFGEN will validate and accept the plant entered.		
2	Type in a valid Material _____ Press the ENTER key	RFGEN will validate and accept the material entered.		
3	Type in a valid location _____ Press the ENTER key	RFGEN will validate and accept the location entered.		
4	Type in a valid Bin _____ Press the ENTER key	RFGEN will validate and accept the Bin as well as display the unique Bin Type. If there are more than one Bin Type, the user is prompted for the Bin Type		
5	Type in an invalid Plant _____ Press the ENTER key	RFGEN will validate the plant entered and display an error message – the field will continue to error out until corrected		
6	Type in an invalid Material _____ Press the ENTER key	RFGEN will validate and display an error message – the field will continue to error out until corrected		
7	Type in an invalid location _____ Press the ENTER key	RFGEN will validate and display an error message – the field will continue to error out until corrected		
8	Type in an invalid Bin _____ Press the ENTER key	RFGEN will validate and display an error message – the field will continue to error out until corrected		
9	Press the “F4” key with the cursor in the plant field	RFGEN will display a list of plants		
10	Press the “F4” key with the cursor in the plant field to select and return a plant to the plant field	RFGEN will display a list of plants and when selected, the plant will be returned to the plant field		
11	Press the “F4” key with the cursor in the material field	RFGEN will display a list of materials		

12	Press the "F4" key with the cursor in the location field	RFGEN will display a list of locations		
13	Press the "F4" key with the cursor in the location field to select and return a location to the location field	RFGEN will display a list of locations and when selected, the location will be returned to the location field		
14	Press the "F4" key with the cursor in the material field to select and return an item to the material field	RFGEN will display a list of items and when selected, the item will be returned to the material field		
15	If the material is batch controlled Material _____ Batch _____ Location _____ Qty _____ Reason _____	RFGEN will display the Batch field, otherwise it will be hidden.		
16	If the Adjustment Quantity processing option is set to "blank" Material _____ Location _____ Qty _____	RFGEN will disallow a negative quantity available and display an error message		
17	At the RFGEN "Enter to Accept Prompt" the transaction is submitted	Confirm the inventory adjustment results		

Overall Test Case Results

Pass/Fail:	
Tester/Date:	
Re-Tester/Date:	

Actual Results:	
------------------------	--

Comments:	
------------------	--