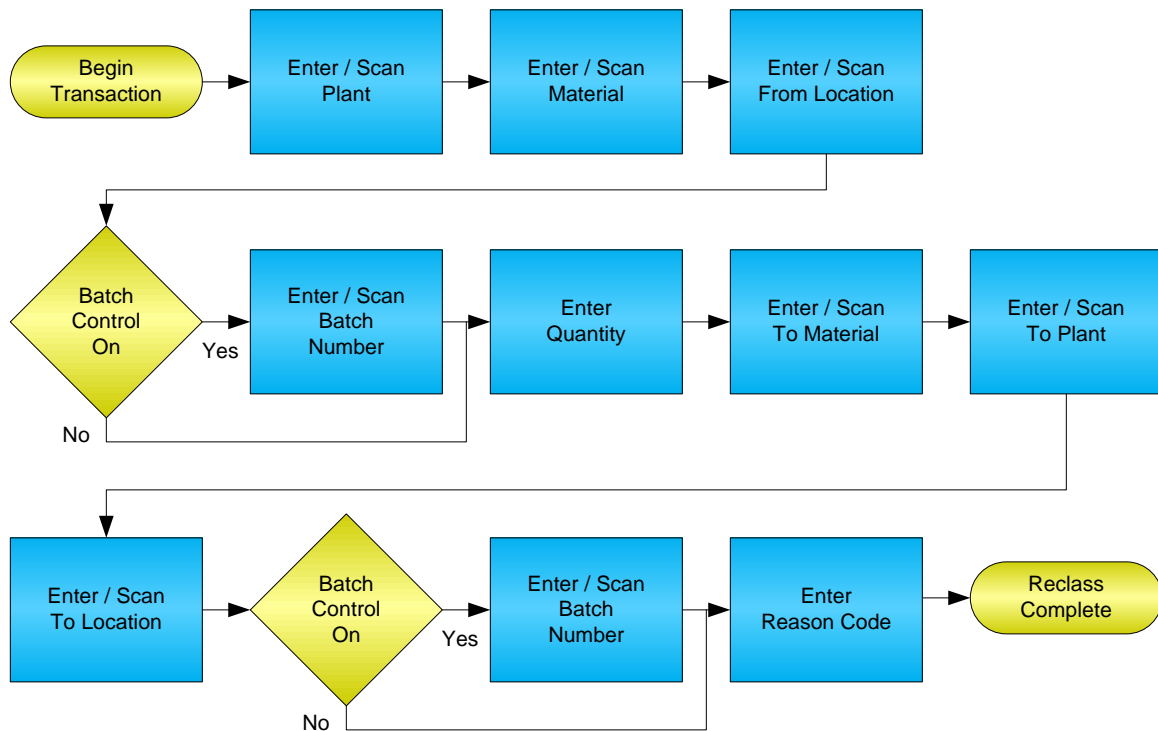


# Inventory Reclassification



© The DataMAX Software Group Inc  
1101 Investment Blvd., Suite 250  
El Dorado Hills, CA 95762  
(916) 939-4065

SAP® is registered trademark of SAP Corp.® and protected by national and international copyright laws.

# License Agreement

All information contained in this document is **Copyright 2012, the DataMAX Software Group, Inc. and Others, All Rights Are Reserved by DataMAX.** This document may not be published, nor used without the prior written consent of DataMAX. **Use of the RFgen Software 'Open Source' code is at all times subject to the DataMAX Open Source Licensing Agreement,** which must be accepted at the time the source code is installed on your computer system. For your convenience, a text copy of the Open Source Licensing Agreement is also loaded (and may be printed from) your RFgen based system.

Requirements:       RFgen Version 3.2.1.5 or later  
                      RFgen SAP Integration Suite

## TABLE OF CONTENTS

- FIMIRO200 – INVENTORY RECLASSIFICATION ..... **2**
  - ✓ VALIDATIONS ..... 2
  - ✓ EDITS ..... 3
  - ⇄ FUNCTION KEYS ..... 3
  - CONSIDERATIONS ..... 3
- SAP PROGRAMS - REFERENCE ..... **4**
  - SAP INVENTORY RECLASSIFICATIONS: MB1B ..... 4
  - SETUP AN RFGEN MENU ..... 4
- BASIC TEST SCRIPT ..... **5**
- TEST SCRIPT DESCRIPTION: INVENTORY RECLASSIFICATION ..... **6**
  - RFGEN INPUT REQUIREMENTS ..... 6
  - EXECUTION PROCEDURES..... 6
  - OVERALL TEST CASE RESULTS ..... 7

## FIMIRO200 – Inventory Reclassification

```
[Inventory Reclassification]
Plant: 3000
Mat#: 100-100
      Hot Rod Handle Bars
Locn: 0001

Max Reclass: 1990
Qty: 19
```

Submit Refresh Clear Exit

Page 1

```
[Inventory Reclassification]
      Mat: 100-100

Locn: 0001
----- Reclass To -----
Mat#: 100-700
      Sheet metal ST37
Plant: 3000
Locn: 0002

Enter to accept...
```

Submit Refresh Clear Exit

Page 2

This transaction performs a reclassification of inventory, changing one material into another. A reclassification record is recorded and the results can be seen in MMBE.

The following conditions apply to the RFgen implementation for the Inventory Reclassification transaction within the SAP environment.

Note: any of these parameters may be easily adjusted to meet the unique requirements of your company.

### ✓ Validations

Prompt	Method of Validation
From Plant	T001W
From Material	BAPI_MATERIAL_GETLIST
From Batch	BAPI_MATERIAL_GETBATCHES
From Location	BAPI_MATERIAL_GETLIST and T001L
Quantity	BAPI_MATERIAL_AVAILABILITY and MCHB and MARD
To Material	BAPI_MATERIAL_GETLIST and MARA
To Plant	BAPI_MATERIAL_GETLIST using To Material as parameter
To Batch	BAPI_MATERIAL_GETBATCHES
To Location	BAPI_MATERIAL_GETLIST
Reason	T157E

✓ Edits

Condition	Special Circumstance
Default Branch Plant	User Defined
Quantity not greater than Quantity on Hand	
Quantity entered <=0	

⇄ Function Keys

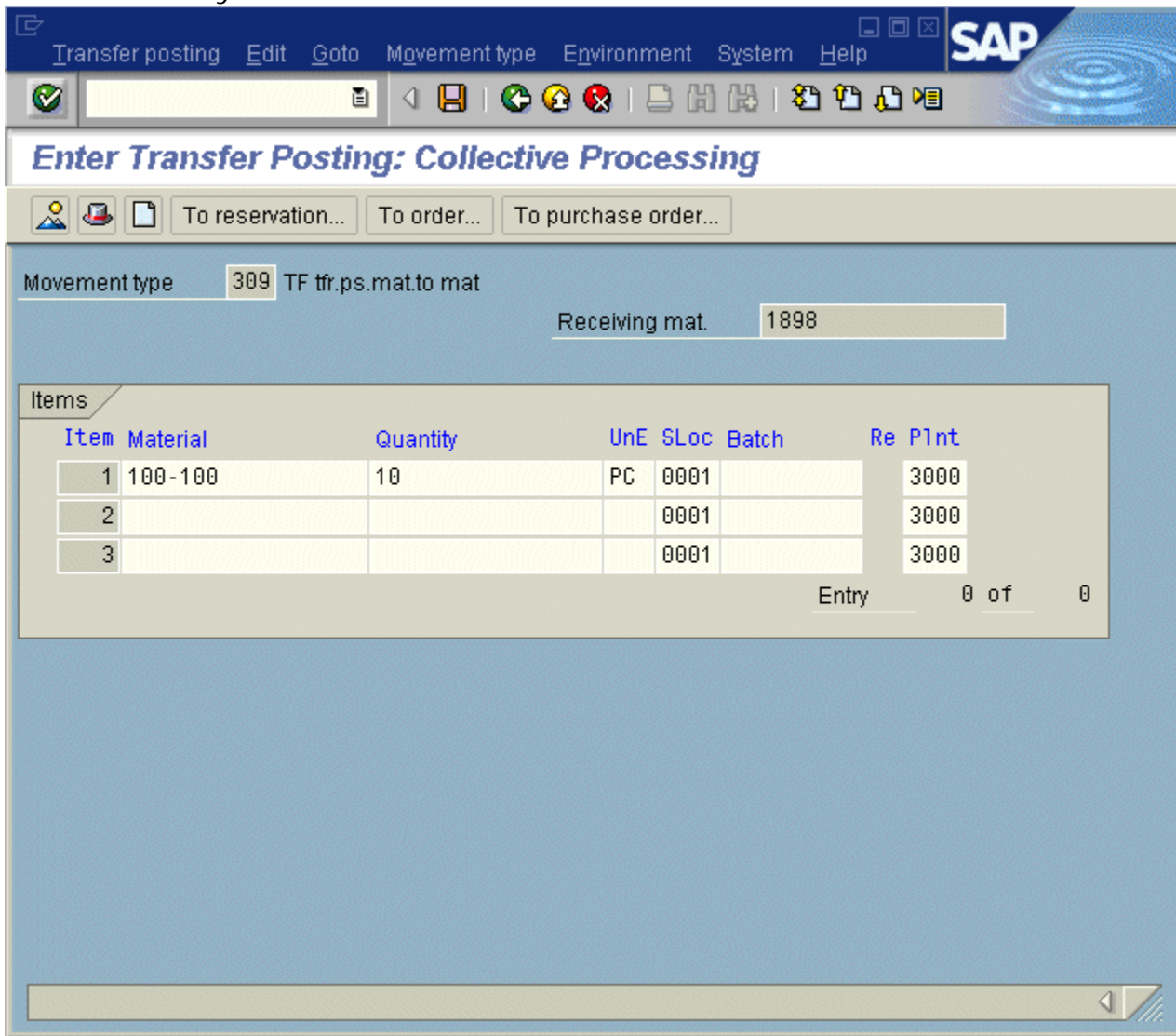
Key	Function
F3	Exit
F4	Search Data for Current Field
F8	Submit value for the Current Screen Display

Considerations

1. Will a material be allowed to be transferred and reclassified to another Branch?
2. Will the Plant default in based on user?
3. Are limitations placed on any Inventory Reclassifications such as dollar amounts?
4. Do you use locations, and if so, are there any special circumstances that need to be considered? (i.e. always issue from a particular location?)
5. Is lot control in use?

SAP Programs - Reference

SAP Inventory Reclassifications: MB1B



Setup an RFgen Menu

To implement an RFgen Form using SAP Movement Types in an RFgen Menu the movement type needs to be specified.

Enter the Form name, followed by a Space. Enter "-TYPE=" and the SAP movement type.

Form/Menu	Description to Display
FIMIR0200 -TYPE=309	Reclassification

## Basic Test Script

1. Record quantities on hand from the Item Ledger for the Plants, Material Numbers and their associated batches and locations for items being reclassified.
2. Create and document the following scenarios:
  - a. Reclassify a material not exceeding either material's quantity on hand.
  - b. Attempt to reclassify the same material.
  - c. If your customization required a limit to be placed on a material to reclassify such as threshold limits of quantities or dollar amounts, attempt to reclassify within the criteria. Appropriate errors should appear.
  - d. Attempt to reclassify a material and transfer it to a Plant that is not set up for that material.
3. View the results using MMBE and see that the quantity on hand updated to the correct amounts on the processed transactions.

## Test Script Description: Inventory Reclassification

### RFgen Input Requirements

Before you begin testing, ensure, for the combination of branch/plant(s) and material(s) you will be testing, that the following is setup in SAP.

- a. Material
- b. Quantity On Hand
- c. Quantity Available

### Execution Procedures

ID	Test Case	Expected Result	Pass	Fail
1	Type in a valid Plant _____ Press the <b>ENTER</b> key	RFGEN will validate and accept the plant entered.		
2	Type in a valid material _____ Press the <b>ENTER</b> key	RFGEN will validate and accept the material entered.		
3	Type in a valid location _____ Press the <b>ENTER</b> key	RFGEN will validate and accept the location entered.		
4	Type in an invalid Plant _____ Press the <b>ENTER</b> key	RFGEN will validate the plant entered and display an error message – the field will continue to error out until corrected		
5	Type in an invalid material _____ Press the <b>ENTER</b> key	RFGEN will validate and display an error message – the field will continue to error out until corrected		
6	Type in an invalid location _____ Press the <b>ENTER</b> key	RFGEN will validate and display an error message – the field will continue to error out until corrected		
7	Press the “F4” key with the cursor in the branch/plant field	RFGEN will display a list of plants		
8	Press the “F4” key with the cursor in the plant field to select and return a plant to the plant field	RFGEN will display a list of plants and when selected, the plant will be returned to the plant field		
9	Press the “F4” key with the cursor in the material field	RFGEN will display a list of items		
10	Press the “F4” key with the cursor in the location field	RFGEN will display a list of locations		
11	Press the “F4” key with the cursor in the location field to select and return a location to the location field	RFGEN will display a list of locations and when selected, the location will be returned to the location field		

12	Press the "F4" key with the cursor in the material field to select and return an item to the material field	RFGEN will display a list of items and when selected, the item will be returned to the material field		
13	If the material is batch controlled the Batch field will display Material _____ Batch _____ Location _____ Qty _____	RFGEN will validate the batch		
14	At the RFGEN "Enter to Accept Prompt" the transaction is added to SAP	Confirm the inventory reclassification results		

Overall Test Case Results

<b>Pass/Fail:</b>	
<b>Tester/Date:</b>	
<b>Re-Tester/Date:</b>	

<b>Actual Results:</b>	
------------------------	--

<b>Comments:</b>	
------------------	--