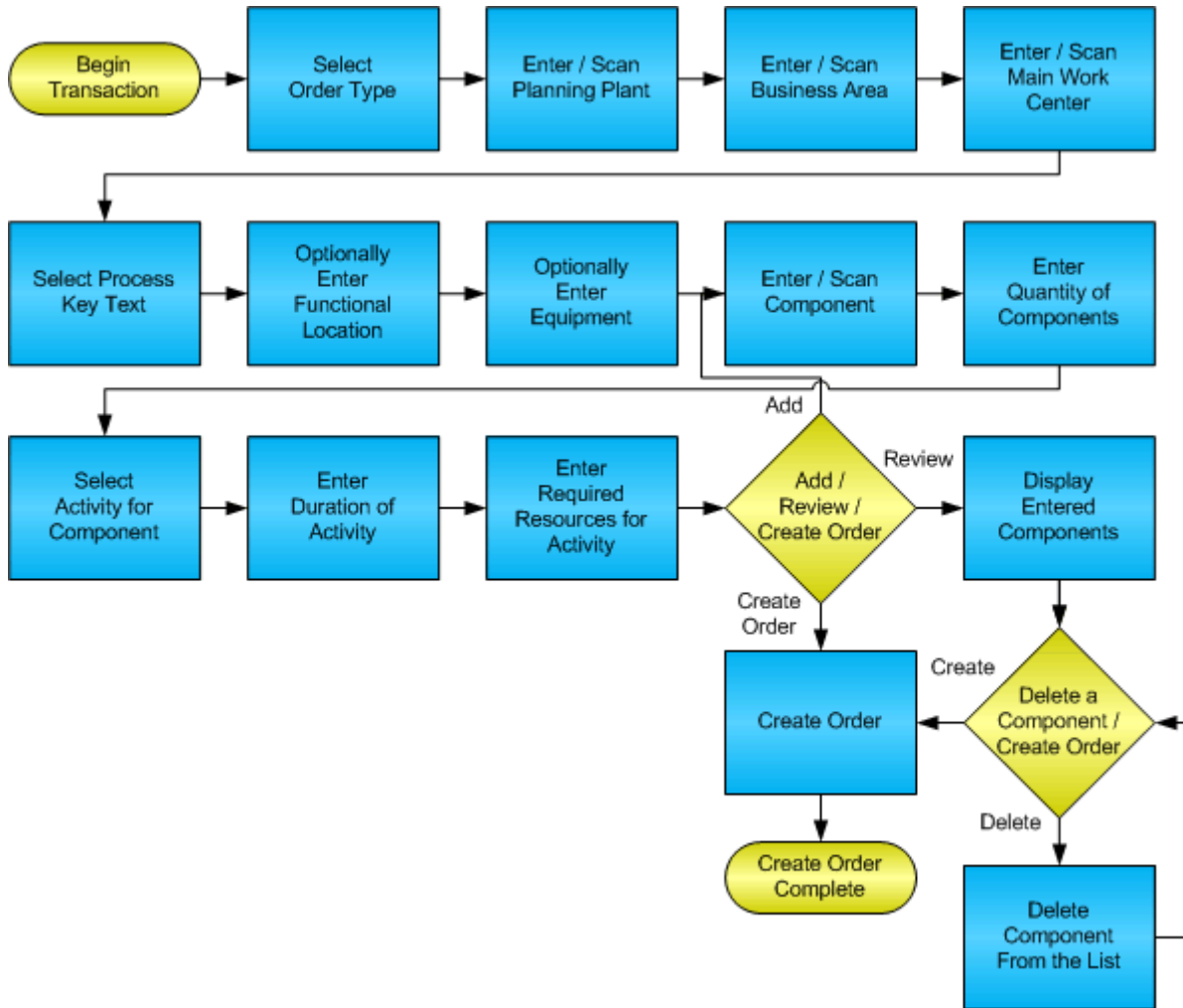


Create Order



© The DataMAX Software Group Inc
1101 Investment Blvd., Suite 250
El Dorado Hills, CA 95762
(916) 939-4065

SAP® is registered trademark of SAP Corp.® and protected by national and international copyright laws.

License Agreement

All information contained in this document is **Copyright 2012, the DataMAX Software Group, Inc. and Others, All Rights Are Reserved by DataMAX.** This document may not be published, nor used without the prior written consent of DataMAX. **Use of the RFgen Software 'Open Source' code is at all times subject to the DataMAX Open Source Licensing Agreement,** which must be accepted at the time the source code is installed on your computer system. For your convenience, a text copy of the Open Source Licensing Agreement is also loaded (and may be printed from) your RFgen based system.

Requirements: RFgen Version 3.2.1.17 or later
 RFgen SAP Integration Suite

TABLE OF CONTENTS

FPMCO0200 – CREATE ORDER	2
VALIDATIONS.....	3
EDITS	3
FUNCTION KEYS.....	3
CONSIDERATIONS	3
SAP PROGRAMS - REFERENCE.....	4
SAP PM NOTIFICATION: IW31	4
BASIC TEST SCRIPT	7
TEST SCRIPT DESCRIPTION: CREATE ORDER	7
EXECUTION PROCEDURES.....	7
OVERALL TEST CASE RESULTS	9

FPMCO0200 – Create Order

```
[Create Plant Maint. Order]
Order Type:
AD01-Modification Order
Plan Plant: 3000
Business Area: 3000
Main Work Ctr.: 1111
Action: 103-Repair
Func. Loc: 1032-ADMI-001
Equipment: 10003552
Maxitec-R 3100 Personal Computer
Continue
```

Submit Refresh Clear Exit

Page 1

```
[Create Plant Maint. Order]
Add Component?
100-100
Qty of component: 5
Link component to Activity:
P000001-Material staging
Duration in hours: 1
Qty resources needed: 1
Review Order Create Order
```

Submit Refresh Clear Exit

Page 2

```
[Create Plant Maint. Order]
Added Components:
HOT ROD HANDLE BARS
HOT ROD HANDLE BARS
Add More Components
Remove Comp. Create Order
```

Submit Refresh Clear Exit

Page 3

This transaction captures required details for creating an order. First the type of order is chosen. In this example it is a maintenance order. The Planning plant, business area, main work center and the type of activity are chosen. Optionally the Functional Location and Equipment can be entered. Page 2 allows the user to scan each component and link it with the required activity. Page 3 is optional and allows the removal of previously scanned components. The user can create the order from either page 2 or page 3.

The following conditions apply to the RFgen implementation for the Create Notification transaction within the SAP environment.

Note: any of these parameters may be easily adjusted to meet the unique requirements of your company.

✓ Validations

Prompt	Method of Validation
Order Type	V_AUART view
Planning Plant	T399I table
Business Area	TGSB table
Main Work Center	M_CRAMA view based on planning plant
Action	V_D_T350I view
Functional Location	IFLS_VIEW view
Equipment	EQUI_ADDR view
Component	M_MAT1W view
Quantity of components	> 0 and numeric
Activity	T435T table
Duration of Activity	> 0 and numeric
Quantity of Resources	> 0 and numeric

✓ Edits

Condition	Special Circumstance

⇄ Function Keys

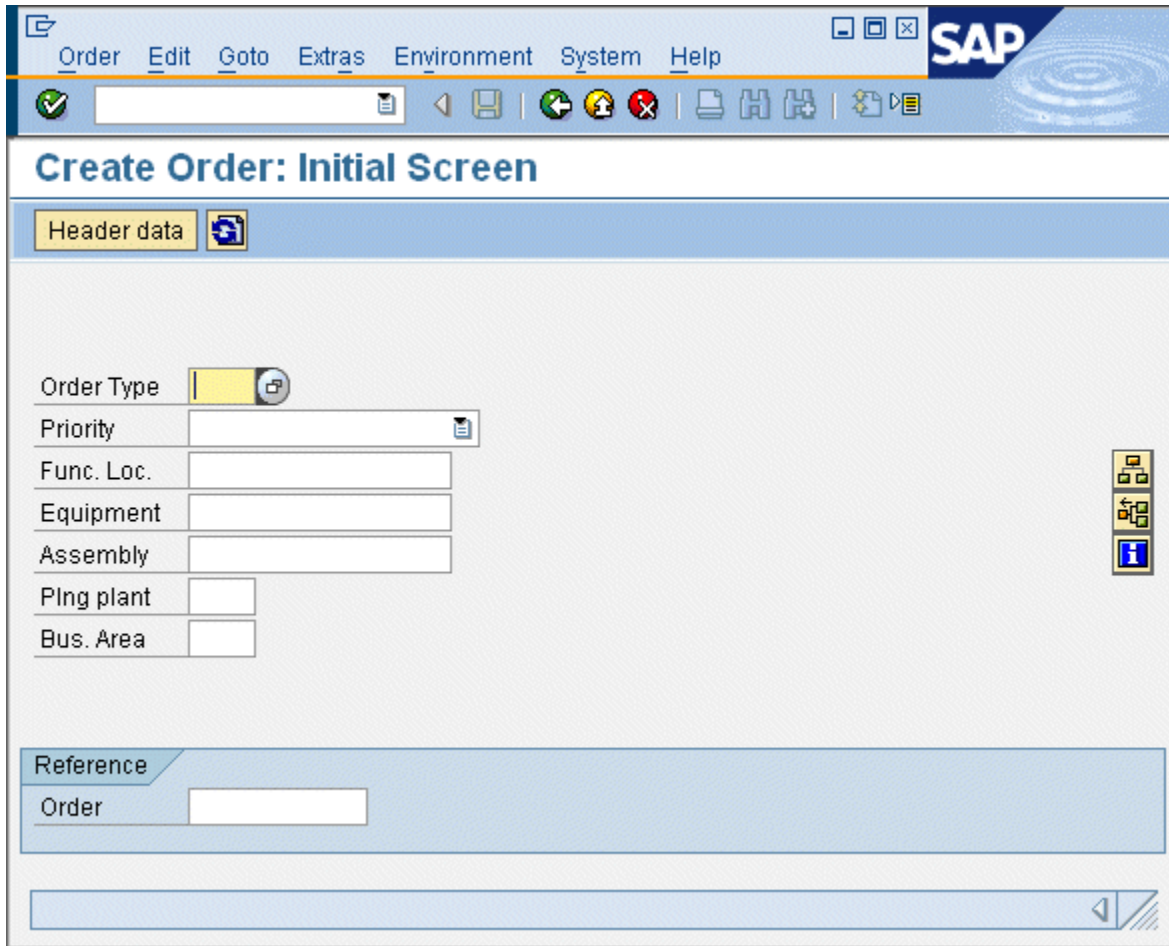
Key	Function
F3	Exit
F4	Search Data for Current Field
F8	Submit value for the Current Screen Display

Considerations

1. Do you want to make the Functional Location or Equipment fields required?
2. Do you want to limit the types of orders that can be created?

SAP Programs - Reference

SAP PM Notification: IW31



The screenshot shows the SAP PM Notification: IW31 - Create Order: Initial Screen. The interface includes a menu bar with options: Order, Edit, Goto, Extras, Environment, System, and Help. Below the menu is a toolbar with various icons for navigation and actions. The main area is titled "Create Order: Initial Screen" and contains a "Header data" section with the following fields:

Order Type	<input type="text"/>
Priority	<input type="text"/>
Func. Loc.	<input type="text"/>
Equipment	<input type="text"/>
Assembly	<input type="text"/>
Plng plant	<input type="text"/>
Bus. Area	<input type="text"/>

Below the header data is a "Reference" section with a table:

Reference	Order
	<input type="text"/>

Enter Order Type, Planning Plant and Business Area

Create Maintenance Order : Central Header



Order: PM01 %000000000001 ✎

Sys. Status: CRTD MANC NTUP i

- HeaderData
- Operations
- Components
- Costs
- Partner
- Objects

Person responsible

PlannerGrp: / 1000

Mn.wk.ctr: 1111 / 1000 Universal Lathe

Person Resp:

Notifctn: ✎

Costs: EUR

PMActType: 103 Repair

SystCond.:

Address: +

Dates

Bsc start: 08/28/2009 Priority: ✎

Basic fin.: 08/28/2009 Revision:

Reference object

Func. Loc.: 3800-ADMI-0001 i

Equipment: 10003552 +

Assembly: i

First operation

Operation: ✎ CcKey Calculate duration ✎

WkCtr/PInt: 1111 / 1000 Ctrl key: PM01 Acty Type: PRT

Work durtn: HR Number: Oprtn dur.: HR Comp.

Person. no:

Order Edit Goto Extras Environment System Help

SAP

Create Maintenance Order : Operation Overview

Order PM01 %000000000001

Sys.Status CRTD MANC NTUP

HeaderData Operations Components Costs Partner Objects Addit. Data Location PI...

OpAc	SOp	Work ctr	Plant	Co	StTextK	S	Operation short text	LT	Work	Un	N	Dur.	Un
0010		1111	1000	PM01	P000003	S	Examine after testing.		1.0	HR	1	1.0	HR
0020		1111	1000	PP01						HR			HR
0030		1111	1000	PP01						HR			HR
0040		1111	1000	PP01						HR			HR
0050		1111	1000	PP01						HR			HR
0060		1111	1000	PP01						HR			HR

Order Edit Goto Extras Environment System Help

SAP

Create Maintenance Order : Component Overview

Order PM01 %000000000001

Sys.Status CRTD MANC

HeaderData Operations Components Costs Partner Objects Addit. Data Location PI...

Item	Component	Description	LT	Reqmnt Qty	UM	IC	S	SLoc	Plnt	OpAc	Bat
0010	100-100	Hot Rod Handle Bars			PC	L		0001	1000	0010	
0020											
0030											
0040											

Basic Test Script

1. Enter an order type, planning plant, business area, main work center and action code
2. Optionally enter a functional location and equipment values
3. Add a component, quantity of that component, link it to an activity and specify how long it will take with how many resources
4. Optionally review and remove already added components from the list before creating the order

Test Script Description: Create Order

Execution Procedures

ID	Test Case	Expected Result	Pass	Fail
1	Enter an Order Type ____ Press the ENTER key	RFGEN will validate and accept the type entered.		
2	Type in a valid Planning Plant _____ Press the ENTER key	RFGEN will validate and accept the plant entered.		
3	Type in an invalid Planning Plant _____ Press the ENTER key	RFGEN will validate and display an error message – the field will continue to error out until corrected		
4	Type in a valid Business Area _____ Press the ENTER key	RFGEN will validate and accept the Business Area entered.		
5	Type in an invalid Business Area _____ Press the ENTER key	RFGEN will validate and display an error message – the field will continue to error out until corrected		
6	Type in a valid Main Work Center _____ Press the ENTER key	RFGEN will validate and accept the Main Work Center entered.		
7	Type in an invalid Main Work Center _____ Press the ENTER key	RFGEN will validate and display an error message – the field will continue to error out until corrected		
8	Enter an Action code ____ Press the ENTER key	RFGEN will validate and accept the Action code entered.		
9	Type in a valid Functional Location _____ Press the ENTER key	RFGEN will validate and accept the Functional Location entered.		
10	Type in an invalid Functional Location _____ Press the ENTER key	RFGEN will validate and display an error message – the field will continue to error out until corrected		

11	Type in a valid Equipment ID _____ Press the ENTER key	RFGEN will validate the Equipment ID		
12	Type in an invalid Equipment ID ____ Press the ENTER key	RFGEN will validate and display an error message – the fields will continue to error out until corrected		
13	Type in a valid Component ID _____ Press the ENTER key	RFGEN will validate the Component ID		
14	Type in an invalid Component ID ____ Press the ENTER key	RFGEN will validate and display an error message – the fields will continue to error out until corrected		
15	Type in a valid Quantity of components value _____ Press the ENTER key	RFGEN will validate the quantity		
16	Type in an invalid Quantity of components ____ Press the ENTER key	RFGEN will validate and display an error message – the fields will continue to error out until corrected		
17	Enter an Activity code ____ Press the ENTER key	RFGEN will validate and accept the Activity code entered.		
18	Type in a valid duration of hours value _____ Press the ENTER key	RFGEN will validate the duration of hours		
19	Type in an invalid duration of hours ____ Press the ENTER key	RFGEN will validate and display an error message – the fields will continue to error out until corrected		
20	Type in a valid Quantity of resources value _____ Press the ENTER key	RFGEN will validate the quantity		
21	Type in an invalid Quantity of resources ____ Press the ENTER key	RFGEN will validate and display an error message – the fields will continue to error out until corrected		
22	Select a component and remove it from the list	When processing, that component will not be included		
23	Submit the transaction to create an order	RFGEN will create the order in SAP		

Overall Test Case Results

Pass/Fail:	
Tester/Date:	
Re-Tester/Date:	

Actual Results:	
------------------------	--

Comments:	
------------------	--