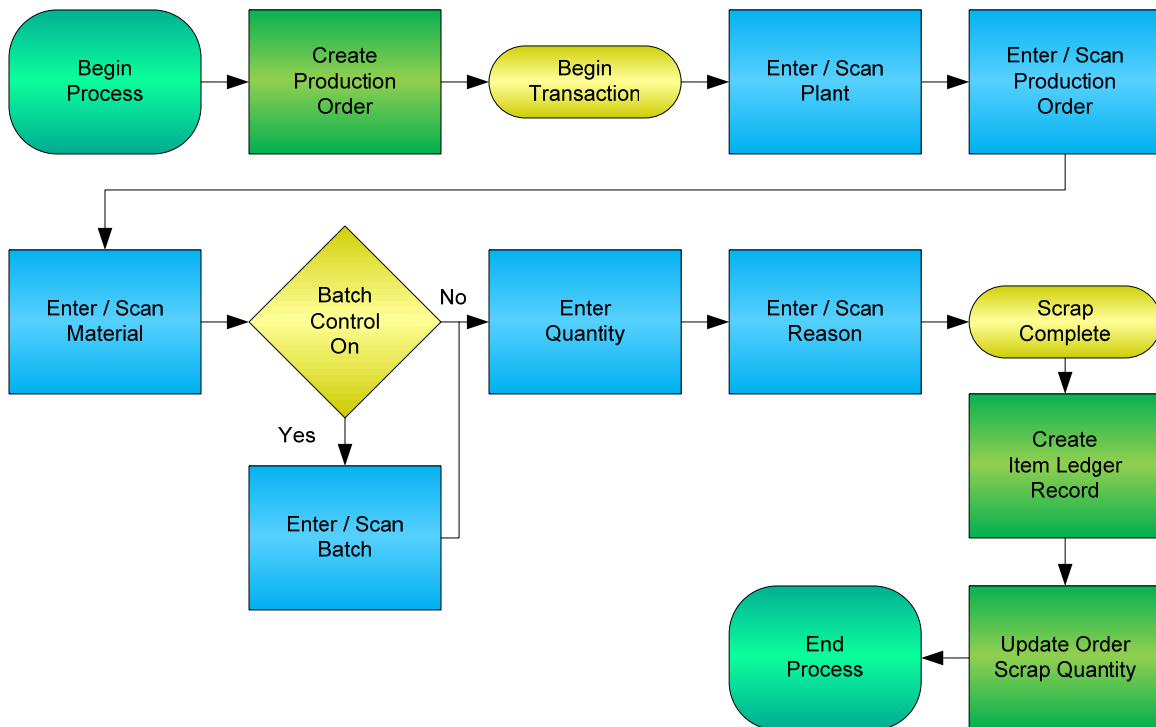


Production Order Component Scrap



© The DataMAX Software Group Inc
1101 Investment Blvd., Suite 250
El Dorado Hills, CA 95762
(916) 939-4065

SAP® is registered trademark of SAP Corp.® and protected by national and international copyright laws.

License Agreement

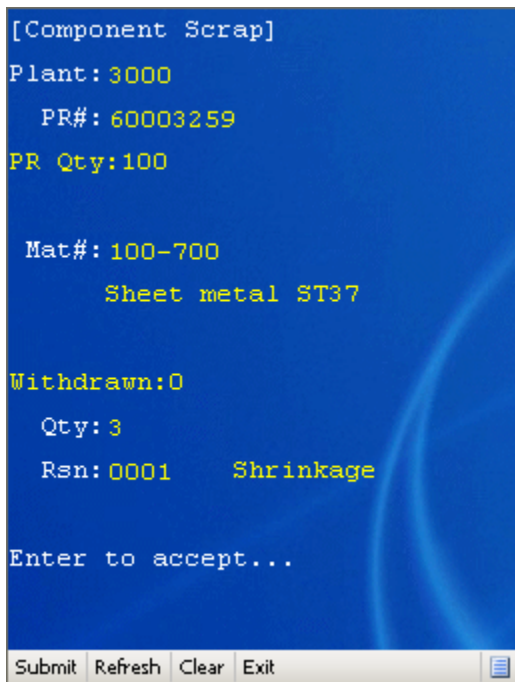
All information contained in this document is **Copyright 2012, the DataMAX Software Group, Inc. and Others, All Rights Are Reserved by DataMAX.** This document may not be published, nor used without the prior written consent of DataMAX. **Use of the RFgen Software 'Open Source' code is at all times subject to the DataMAX Open Source Licensing Agreement,** which must be accepted at the time the source code is installed on your computer system. For your convenience, a text copy of the Open Source Licensing Agreement is also loaded (and may be printed from) your RFgen based system.

Requirements: RFgen Version 3.2.1.5 or later
 RFgen SAP Integration Suite

TABLE OF CONTENTS

- FPRCS0200 – PRODUCTION ORDER COMPONENT SCRAP **2**
 - ✓ VALIDATIONS 2
 - ✓ EDITS 2
 - ⇨ FUNCTION KEYS 2
 - CONSIDERATIONS 3
- SAP PROGRAMS - REFERENCE **3**
 - SAP PRODUCTION ORDER GOODS ISSUE: MB1A (MOVEMENT TYPE 262) 3
 - SAP PRODUCTION ORDER GOODS ISSUE: MB1A (MOVEMENT TYPE 551) 4
 - SETUP AN RFGEN MENU 5
- BASIC TEST SCRIPT **5**
- TEST SCRIPT DESCRIPTION: PRODUCTION ORDER COMPONENT SCRAP **6**
 - RFGEN INPUT REQUIREMENTS 6
 - EXECUTION PROCEDURES..... 6
 - OVERALL TEST CASE RESULTS 8

FPRCS0200 – Production Order Component Scrap



This transaction decreases inventory and identifies it as material that has been scrapped for a production order.

The following conditions apply to the RFgen implementation for the Production Order Component Scrap transaction within the SAP environment.

Note: any of these parameters may be easily adjusted to meet the unique requirements of your company.

✓ Validations

Prompt	Method of Validation
Plant	T001W table
Production Order	AFPO table
Component Material	RESB table
Batch	BAPI_MATERIAL_GETBATCHES
Quantity	
Reason	T157E table

✓ Edits

Condition	Table
Default Branch Plant	User Defined
Quantity	Less than or equal to Withdrawn quantity, positive and numeric

⇌ Function Keys

Key	Function
F3	Exit
F4	Search Data for Current Field
F8	Submit value for the Current Screen Display

Considerations

1. Does Plant default based on user?
2. Will negative quantities be allowed?

SAP Programs - Reference

SAP Production Order Goods Issue: MB1A (Movement Type 262)

Goods issue Edit Goto Movement type Environment System Help

Enter Goods Issue: Collective Processing

To reservation... To order...

Movement type 262 RE for order
Business area 1000
Order 60004231 Pump cast steel IDESNORM 170-230 Batch

Item	Material	Quantity	UnE	SLoc	Batch	Re	Plnt
1	101-100	5	PC	0001		3000	
2				0001		3000	
3				0001		3000	

Entry 1 of 1

The first step is to perform a reversal using movement type 262.

SAP Production Order Goods Issue: MB1A (Movement Type 551)

Enter Goods Issue: New Items

To reservation... To order...

Movement type GI scrapping
G/L account no.
Business area
Cost center
Recipient

Item	Material	Quantity	UnE	SLoc	Batch	Re PInt
1	101-100	5		0001		3000
2				0001		3000
3				0001		3000

The second step is to perform the scrap movement using movement type 551.

Setup an RFgen Menu

To implement an RFgen Form using SAP Movement Types in an RFgen Menu the movement type needs to be specified.

Enter the Form name, followed by a Space. Enter “-SCRAPTYPE=” and the proper movement type. Since this is a two step process, enter “-REVTYPE=” and its movement type.

Form/Menu	Description to Display
FPRCS0200 -SCRAPTYPE=551 -REVTYPE=262	Component Scrap

Basic Test Script

1. Record quantities on hand from the Item Ledger for the Plant, Material and their associated batches and locations.
2. Scrap Components from that production order then review and verify that the component material scrapped reflects the correct quantity.
3. Review MB51 to verify that the quantity on hand updated to the correct amounts the processed transactions.

Test Script Description: Production Order Component Scrap

RFgen Input Requirements

Before you begin testing, ensure, for the combination of plant(s) and component material(s) you will be testing, that the following is setup in SAP.

- a. Plant
- b. Production Order
- c. Component Material
- d. Batches
- e. Quantity

Execution Procedures

ID	Test Case	Expected Result	Pass	Fail
1	Type in a valid Plant _____ Press the ENTER key	RFGEN will validate and accept the plant entered.		
2	Type in a valid Production Order _____ Press the ENTER key	RFGEN will validate and accept the production order number entered.		
3	Type in a valid material _____ Press the ENTER key	RFGEN will validate and accept the material entered.		
4	Type in a valid batch _____ Press the ENTER key	RFGEN will validate and accept the batch number entered.		
5	Type in a valid Quantity _____ Press the ENTER key	RFGEN will validate and accept the quantity entered		
6	Type in a valid Reason code ____ Press the ENTER key	RFGEN will validate and accept the reason code entered		
7	Type in an invalid Plant _____ Press the ENTER key	RFGEN will validate the plant entered and display an error message – the field will continue to error out until corrected		
8	Type in an invalid Production Order _____ Press the ENTER key	RFGEN will validate and display an error message – the field will continue to error out until corrected		
9	Type in an invalid material _____ Press the ENTER key	RFGEN will validate and display an error message – the field will continue to error out until corrected		
10	Type in an invalid batch _____ Press the ENTER key	RFGEN will validate and display an error message – the field will continue to error out until corrected		
11	Type in an invalid Reason code ____ Press the ENTER key	RFGEN will validate and display an error message – the field will continue to error out until corrected		

12	Press the "F4" key with the cursor in the plant field	RFGEN will display a list of plants		
13	Press the "F4" key with the cursor in the plant field to select and return a plant	RFGEN will display a list of plants and when selected, the plant will be returned		
14	Press the "F4" key with the cursor in the Production Order field	RFGEN will display a list of production orders		
15	Press the "F4" key with the cursor in the Production Order field to select and return a production order	RFGEN will display a list of production orders and when selected, the production order will be returned		
16	Press the "F4" key with the cursor in the Material field	RFGEN will display a list of document types		
17	Press the "F4" key with the cursor in the Material field to select and return a component material	RFGEN will display a list of component materials and when selected, the component materials will be returned		
18	Press the "F4" key with the cursor in the Batch field	RFGEN will display a list of batch numbers		
19	Press the "F4" key with the cursor in the Batch field to select and return an batch number	RFGEN will display a list of batch numbers and when selected, the batch number will be returned		
20	Press the "F4" key with the cursor in the Reason field	RFGEN will display a list of reason codes		
21	Press the "F4" key with the cursor in the Reason field to select and return a reason code	RFGEN will display a list of reason codes and when selected, the reason code will be returned		
22	At the RFGEN "Enter to Accept Prompt" the transaction is submitted	Confirm the Production Order Component Scrap results		

Overall Test Case Results

Pass/Fail:	
Tester/Date:	
Re-Tester/Date:	

Actual Results:	
------------------------	--

Comments:	
------------------	--