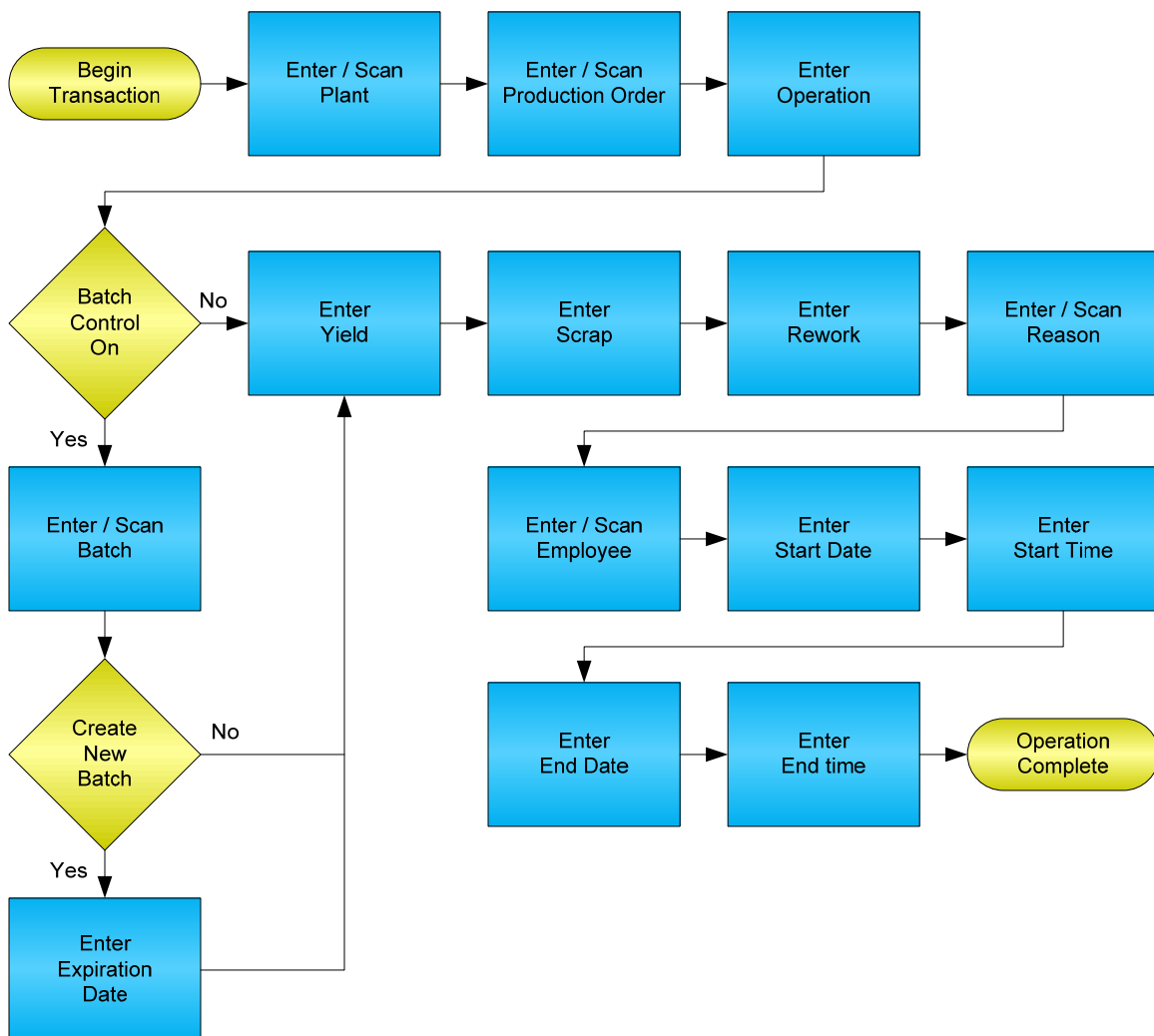


# Production Order Operation Confirmation



© The DataMAX Software Group Inc  
1101 Investment Blvd., Suite 250  
El Dorado Hills, CA 95762  
(916) 939-4065

SAP® is registered trademark of SAP Corp.® and protected by national and international copyright laws.

# License Agreement

All information contained in this document is **Copyright 2012, the DataMAX Software Group, Inc. and Others, All Rights Are Reserved by DataMAX.** This document may not be published, nor used without the prior written consent of DataMAX. **Use of the RFgen Software 'Open Source' code is at all times subject to the DataMAX Open Source Licensing Agreement,** which must be accepted at the time the source code is installed on your computer system. For your convenience, a text copy of the Open Source Licensing Agreement is also loaded (and may be printed from) your RFgen based system.

Requirements:       RFgen Version 3.2.1.5 or later  
                      RFgen SAP Integration Suite

## TABLE OF CONTENTS

- FPROC0200 – PRODUCTION ORDER OPERATION CONFIRMATION ..... **2**
  - ✓ VALIDATIONS ..... 2
  - ✓ EDITS ..... 3
  - ⇄ FUNCTION KEYS ..... 3
  - CONSIDERATIONS ..... 3
- SAP PROGRAMS - REFERENCE ..... **4**
  - SAP GOODS MOVEMENT: CO11N ..... 4
  - SETUP AN RFGEN MENU ..... 5
- BASIC TEST SCRIPT ..... **5**
- TEST SCRIPT DESCRIPTION: PRODUCTION ORDER OPERATION  
CONFIRMATION ..... **6**
  - RFGEN INPUT REQUIREMENTS ..... 6
  - EXECUTION PROCEDURES..... 6
  - OVERALL TEST CASE RESULTS ..... 9

## FPROC0200 – Production Order Operation Confirmation

```

[Operation Confirmation]
Plant: 3000
  PR#: 60003247
    P-101
      Pump PRECISION 101
Oper#: 30   Lackieren Gehäuse
Batch: 20110303
ExpDat: 12/31/2012
Yield: 101.000
Scrap: 0
Rework: 10
Reason: 0001
      Std. Reason
  
```

Submit Refresh Clear Exit

Page 1

```

[Operation Confirmation]

  Empl#: 10205
Start Date: 9/17/2007
  Time: 01:05:42 PM
End Date: 9/18/2007
  Time: 07:00:00 AM
Enter to accept...
  
```

Submit Refresh Clear Exit

Page 2

This transaction completes the operation of a production order work order by increasing inventory for the manufactured material and updating the status of the production order to identify the operation as being complete.

The following conditions apply to the RFgen implementation for the Production Order Operation Confirmation transaction within the SAP environment.

Note: any of these parameters may be adjusted to meet the unique requirements of your company.

### ✓ Validations

Prompt	Method of Validation
Plant	T001W table
Production Order	AFPO table
Operation Number	PLPO table
Batch	BAPI_MATERIAL_GETBATCHES
Expire Date	
Yield	
Scrap	
Rework	
Reason	T157E table
Employee	BAPI_EMPLOYEE_GETDATA
Start Date	
Start Time	
End Date	
End Time	

✓ Edits

Condition	Table
Default Branch Plant	User Defined
Expire Date	Must be a valid date
Yield	Must be numeric
Scrap	Must be numeric
Rework	Must be numeric
Start Date	Must be a valid date
Start Time	Must be a valid time
End Date	Must be a valid date
End Time	Must be a valid time

↔ Function Keys

Key	Function
F3	Exit
F4	Search Data for Current Field
F8	Submit value for the Current Screen Display

Considerations

1. Does Plant default based on user?
2. Are negative quantities allowed on the completion?

# SAP Programs - Reference

## SAP Goods Movement: CO11N

Confirmation   Edit   Goto   User settings   Environment   System   Help

**Enter time ticket for production order**

Goods movements | Actual data

Confirmation: [ ]

Order: 60004230   Material: [ ]

Oper./activity: 10   Sequence: [ ]

Work center: [ ] / [ ]

Confirm.type: Partial confirmation    Clear open reservations

lot sizes

	To confirm	Un.
Yield	60	[ ]
Scrap	3	[ ]
Rework	2	[ ]
Reason	0003	[ ]

activities

	To confirm	Un.	N	Σ Already confirmed	Σ Planned total	Un.
Setup	[ ]	[ ]	<input type="checkbox"/>	0.000	0.000	[ ]
Machine	[ ]	[ ]	<input type="checkbox"/>	0.000	0.000	[ ]
Labor	[ ]	[ ]	<input type="checkbox"/>	0.000	0.000	[ ]
	[ ]	[ ]				[ ]
	[ ]	[ ]				[ ]

Propose actual data (Shift+F1)

## Setup an RFgen Menu

To implement an RFgen Form using SAP Movement Types in an RFgen Menu the movement type needs to be specified.

Enter the Form name, followed by a Space. Enter “-TYPE=” and the proper movement type.

<b>Form/Menu</b>	<b>Description to Display</b>
FPROC0200 -TYPE=101	Operation Confirmation

## Basic Test Script

1. Record quantities on hand from the Item Ledger for the Plants, materials and their associated batches and locations that you will perform an Operation Confirmation on.
2. Complete the Production Order and then review the Production Order Confirmation program and verify that it reflects the correct status.
3. Review the Item Ledger using CO14 to see that the quantity on hand updated to the correct amounts on your valid transactions.

## Test Script Description: Production Order Operation Confirmation

### RFgen Input Requirements

Before you begin testing, ensure, for the combination of plant(s) and Production Order(s) you will be testing, that the following is setup in SAP.

- a. Plant
- b. Production Order
- c. Operation
- d. Material
- e. Employee

### Execution Procedures

ID	Test Case	Expected Result	Pass	Fail
1	Type in a valid Plant _____ Press the <b>ENTER</b> key	RFGEN will validate and accept the plant entered.		
2	Type in a valid Production Order _____ Press the <b>ENTER</b> key	RFGEN will validate and accept the Production Order entered.		
3	Type in a valid operation _____ Press the <b>ENTER</b> key	RFGEN will validate and accept the operation entered.		
4	Type in a valid batch _____ Press the <b>ENTER</b> key	RFGEN will validate and accept the batch entered if the material is batch controlled.		
5	Type in a valid expire date _____ Press the <b>ENTER</b> key	RFGEN will validate and accept the expire date entered		
6	Type in a valid yield quantity _____ Press the <b>ENTER</b> key	RFGEN will validate and accept the yield quantity entered		
7	Type in a valid scrap quantity _____ Press the <b>ENTER</b> key	RFGEN will validate and accept the scrap quantity entered		
8	Type in a valid rework quantity _____ Press the <b>ENTER</b> key	RFGEN will validate and accept the rework quantity entered		
9	Type in a valid reason code _____ Press the <b>ENTER</b> key	RFGEN will validate and accept the reason code entered		
10	Type in a valid employee _____ Press the <b>ENTER</b> key	RFGEN will validate and accept the employee code entered		
11	Type in a valid start date _____ Press the <b>ENTER</b> key	RFGEN will validate and accept the start date entered		
12	Type in a valid start time _____ Press the <b>ENTER</b> key	RFGEN will validate and accept the start time entered		

13	Type in a valid end date _____ Press the <b>ENTER</b> key	RFGEN will validate and accept the end date entered		
14	Type in a valid end time _____ Press the <b>ENTER</b> key	RFGEN will validate and accept the end time entered		
15	Type in an invalid Plant _____ Press the <b>ENTER</b> key	RFGEN will validate the plant entered and display an error message – the field will continue to error out until corrected		
16	Type in an invalid Production Order _____ Press the <b>ENTER</b> key	RFGEN will validate and display an error message – the field will continue to error out until corrected		
17	Type in an invalid operation _____ Press the <b>ENTER</b> key	RFGEN will validate and display an error message – the field will continue to error out until corrected		
18	Type in an invalid batch _____ Press the <b>ENTER</b> key	RFGEN will validate and display an error message – the field will continue to error out until corrected		
19	Type in an invalid expire date _____ Press the <b>ENTER</b> key	RFGEN will validate and display an error message – the field will continue to error out until corrected		
20	Type in an invalid yield quantity _____ Press the <b>ENTER</b> key	RFGEN will validate and display an error message – the field will continue to error out until corrected		
21	Type in an invalid scrap quantity _____ Press the <b>ENTER</b> key	RFGEN will validate and display an error message – the field will continue to error out until corrected		
22	Type in an invalid rework quantity _____ Press the <b>ENTER</b> key	RFGEN will validate and display an error message – the field will continue to error out until corrected		
23	Type in an invalid reason code _____ Press the <b>ENTER</b> key	RFGEN will validate and display an error message – the field will continue to error out until corrected		
24	Type in an invalid employee code _____ Press the <b>ENTER</b> key	RFGEN will validate and display an error message – the field will continue to error out until corrected		
25	Type in an invalid start date _____ Press the <b>ENTER</b> key	RFGEN will validate and display an error message – the field will continue to error out until corrected		
26	Type in an invalid start time _____ Press the <b>ENTER</b> key	RFGEN will validate and display an error message – the field will continue to error out until corrected		
27	Type in an invalid end date _____ Press the <b>ENTER</b> key	RFGEN will validate and display an error message – the field will continue to error out until corrected		
28	Type in an invalid end time _____ Press the <b>ENTER</b> key	RFGEN will validate and display an error message – the field will continue to error out until corrected		

29	Press the "F4" key with the cursor in the plant field	RFGEN will display a list of plants		
30	Press the "F4" key with the cursor in the plant field to select and return a plant	RFGEN will display a list of plants and when selected, the plant will be returned		
31	Press the "F4" key with the cursor in the Production Order field	RFGEN will display a list of production orders		
32	Press the "F4" key with the cursor in the Production Order field to select and return a production order	RFGEN will display a list of production orders and when selected, the production order will be returned		
33	Press the "F4" key with the cursor in the Operation field	RFGEN will display a list of operations		
34	Press the "F4" key with the cursor in the Operation field to select and return an order type	RFGEN will display a list of operations and when selected, the operation will be returned		
35	Press the "F4" key with the cursor in the Batch field	RFGEN will display a list of batches		
36	Press the "F4" key with the cursor in the Batch field to select and return a batch number	RFGEN will display a list of batches and when selected, the batch will be returned		
37	Press the "F4" key with the cursor in the Reason code field	RFGEN will display a list of reason codes		
38	Press the "F4" key with the cursor in the Reason code field to select and return a reason code	RFGEN will display a list of reason codes and when selected, the reason code will be returned		
39	Press the "F4" key with the cursor in the Start Date field	RFGEN will default in the current date		
40	Press the "F4" key with the cursor in the Start Time field	RFGEN will default in the current time		
41	Press the "F4" key with the cursor in the End Date field	RFGEN will default in the current date		
42	Press the "F4" key with the cursor in the End Time field	RFGEN will default in the current time		
43	At the RFGEN "Enter to Accept Prompt" the transaction is submitted	Confirm the Production Order Operation Confirmation results		

## Overall Test Case Results

<b>Pass/Fail:</b>	
<b>Tester/Date:</b>	
<b>Re-Tester/Date:</b>	

<b>Actual Results:</b>	
------------------------	--

<b>Comments:</b>	
------------------	--