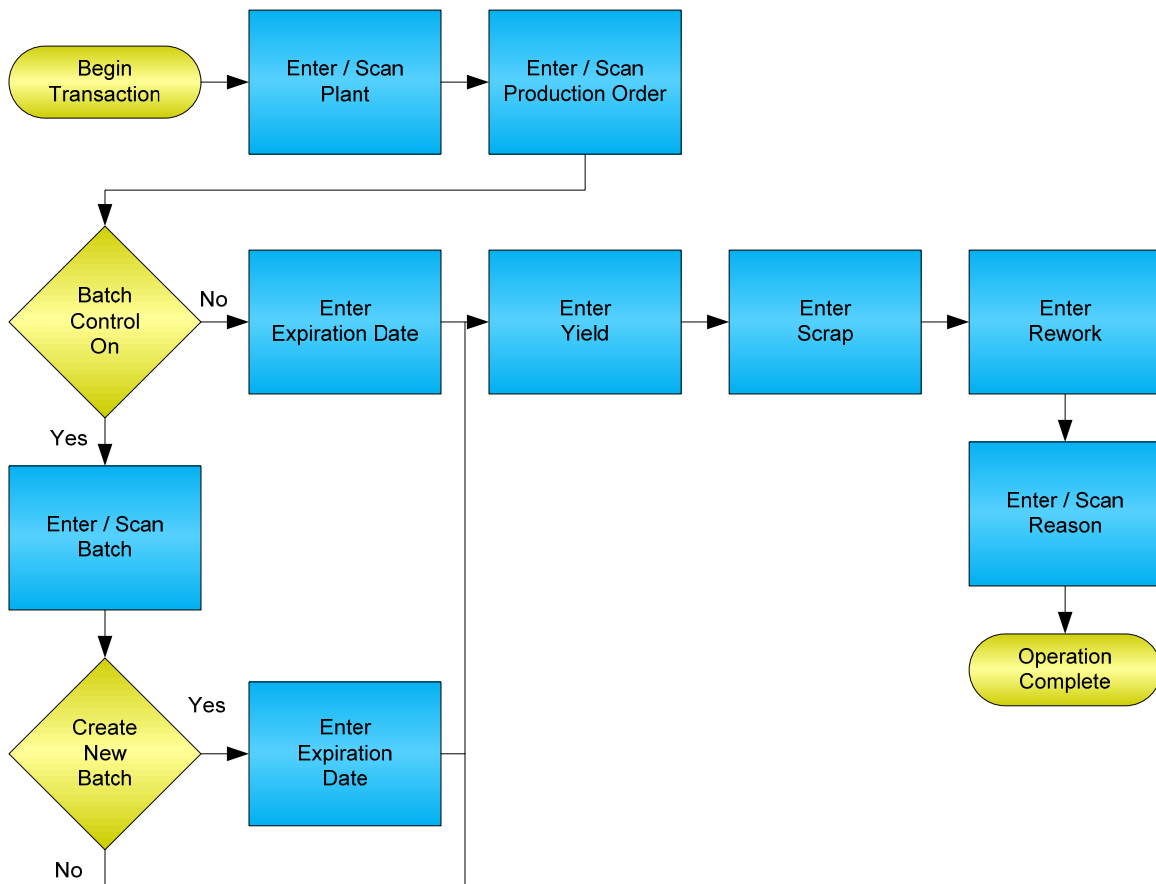


# Production Order Order Confirmation



© The DataMAX Software Group Inc  
1101 Investment Blvd., Suite 250  
El Dorado Hills, CA 95762  
(916) 939-4065

SAP® is registered trademark of SAP Corp.® and protected by national and international copyright laws.

# License Agreement

All information contained in this document is **Copyright 2012, the DataMAX Software Group, Inc. and Others, All Rights Are Reserved by DataMAX.** This document may not be published, nor used without the prior written consent of DataMAX. **Use of the RFgen Software 'Open Source' code is at all times subject to the DataMAX Open Source Licensing Agreement,** which must be accepted at the time the source code is installed on your computer system. For your convenience, a text copy of the Open Source Licensing Agreement is also loaded (and may be printed from) your RFgen based system.

Requirements:       RFgen Version 3.2.1.5 or later  
                      RFgen SAP Integration Suite

## TABLE OF CONTENTS

- FPROC0200 – PRODUCTION ORDER ORDER CONFIRMATION..... **2**
  - ✓ VALIDATIONS ..... 2
  - ✓ EDITS ..... 2
  - ⇄ FUNCTION KEYS ..... 2
  - CONSIDERATIONS ..... 3
- SAP PROGRAMS - REFERENCE ..... **3**
  - SAP PRODUCTION ORDER CONFIRMATION: CO15..... 3
  - SETUP AN RFGEN MENU ..... 4
- BASIC TEST SCRIPT ..... **4**
- TEST SCRIPT DESCRIPTION: PRODUCTION ORDER ORDER CONFIRMATION**5**
  - RFGEN INPUT REQUIREMENTS ..... 5
  - EXECUTION PROCEDURES..... 5
  - OVERALL TEST CASE RESULTS ..... 7

## FPROC0200 – Production Order Order Confirmation

```
[Order Confirmation]
Plant: 3000
  PR#: 60003259
    P-100
      Pump PRECISION 100
PR Qty: 100
Batch: 20110303
ExpDat: 12/31/2012
Yield: 100.000
Scrap: 0.000
Rework: 5
Reason: 0001 Std. Reason
Enter to accept...

Submit Refresh Clear Exit
```

This transaction completes the production order by increasing finished good inventory and closes the production order to identify the process as being complete.

The following conditions apply to the RFgen implementation for the Production Order Operation Confirmation transaction within the SAP environment.

Note: any of these parameters may be easily adjusted to meet the unique requirements of your company.

### ✓ Validations

Prompt	Method of Validation
Plant	T001W table
Production Order	AFPO table
Batch	BAPI_MATERIAL_GETBATCHES
Expire Date	
Yield	
Scrap	
Rework	
Reason	T157E table

### ✓ Edits

Condition	Table
Default Branch Plant	User Defined
Expire Date	Must be a valid date
Yield	Must be numeric
Scrap	Must be numeric
Rework	Must be numeric

### ⇨ Function Keys

Key	Function
F3	Exit
F4	Search Data for Current Field
F8	Submit value for the Current Screen Display

## Considerations

1. Does Plant default based on user?
2. Are negative quantities allowed on the completion?

## SAP Programs - Reference

### SAP Production Order Confirmation: CO15

The screenshot displays the SAP CO15 'Confirmation of Production Order Create : Actual data' window. The interface includes a menu bar (Confirmation, Edit, Goto, Parameters, Selection, System, Help) and a toolbar with standard SAP navigation icons. The main area shows the following data:

Order: 60004230      Status: REL PCNF PRC BCRQ GMPS MANC NMAT PD...  
Material no.: P-109-B      Pump cast steel IDESNORM 170-230 Batch

Confirmation options:  Partial conf.     Final conf.     Aut.fin.confirm     Clear open reservs.

**Actual data**

	Current confirm.	Un.	Already confirmed	Total to confirm	Un.
Yield to conf.	55	PC	99	100	PC
Confirmed scrap	2		1	0	
Rework	1		0		
Reason	0003				

Personnel no.: 10205

Execution start: 12/14/2006 09:20:46      12/06/2006      12/08/2006  
Finish execut.: 12/14/2006 09:20:46      12/18/2006

Posting date: 12/14/2006

Confirm. text: [ ] Long txt exists

Goods movements (Shift+F6)

### Setup an RFgen Menu

To implement an RFgen Form using SAP Movement Types in an RFgen Menu the movement type needs to be specified.

Enter the Form name, followed by a Space. Enter “-TYPE=” and the proper movement type.

<b>Form/Menu</b>	<b>Description to Display</b>
FPRRC0200 -TYPE=101	Order Confirmation

### Basic Test Script

1. Record quantities on hand from the Item Ledger for the Plants, materials and their associated batches and locations that you will perform an Order Confirmation on.
2. Complete the Production Order and then review the Production Order Confirmation program and verify that it reflects the correct status.
3. Review the Item Ledger using CO14 to see that the quantity on hand updated to the correct amounts on your valid transactions.

## Test Script Description: Production Order Order Confirmation

### RFgen Input Requirements

Before you begin testing, ensure, for the combination of plant(s) and Production Order(s) you will be testing, that the following is setup in SAP.

- a. Plant
- b. Production Order
- c. Operation
- d. Material
- e. Employee

### Execution Procedures

ID	Test Case	Expected Result	Pass	Fail
1	Type in a valid Plant _____ Press the <b>ENTER</b> key	RFGEN will validate and accept the plant entered.		
2	Type in a valid Production Order _____ Press the <b>ENTER</b> key	RFGEN will validate and accept the Production Order entered.		
3	Type in a valid batch _____ Press the <b>ENTER</b> key	RFGEN will validate and accept the batch entered if the material is batch controlled.		
4	Type in a valid expire date _____ Press the <b>ENTER</b> key	RFGEN will validate and accept the expire date entered		
5	Type in a valid yield quantity _____ Press the <b>ENTER</b> key	RFGEN will validate and accept the yield quantity entered		
6	Type in a valid scrap quantity _____ Press the <b>ENTER</b> key	RFGEN will validate and accept the scrap quantity entered		
7	Type in a valid rework quantity _____ Press the <b>ENTER</b> key	RFGEN will validate and accept the rework quantity entered		
8	Type in a valid reason code _____ Press the <b>ENTER</b> key	RFGEN will validate and accept the reason code entered		
9	Type in an invalid Plant _____ Press the <b>ENTER</b> key	RFGEN will validate the plant entered and display an error message – the field will continue to error out until corrected		
10	Type in an invalid Production Order _____ Press the <b>ENTER</b> key	RFGEN will validate and display an error message – the field will continue to error out until corrected		
11	Type in an invalid batch _____ Press the <b>ENTER</b> key	RFGEN will validate and display an error message – the field will continue to error out until corrected		

12	Type in an invalid expire date _____ Press the <b>ENTER</b> key	RFGEN will validate and display an error message – the field will continue to error out until corrected		
13	Type in an invalid yield quantity _____ Press the <b>ENTER</b> key	RFGEN will validate and display an error message – the field will continue to error out until corrected		
14	Type in an invalid scrap quantity _____ Press the <b>ENTER</b> key	RFGEN will validate and display an error message – the field will continue to error out until corrected		
15	Type in an invalid rework quantity _____ Press the <b>ENTER</b> key	RFGEN will validate and display an error message – the field will continue to error out until corrected		
16	Type in an invalid reason code _____ Press the <b>ENTER</b> key	RFGEN will validate and display an error message – the field will continue to error out until corrected		
17	Press the “F4” key with the cursor in the plant field	RFGEN will display a list of plants		
18	Press the “F4” key with the cursor in the plant field to select and return a plant	RFGEN will display a list of plants and when selected, the plant will be returned		
19	Press the “F4” key with the cursor in the Production Order field	RFGEN will display a list of production orders		
20	Press the “F4” key with the cursor in the Production Order field to select and return a production order	RFGEN will display a list of production orders and when selected, the production order will be returned		
21	Press the “F4” key with the cursor in the Batch field	RFGEN will display a list of batches		
22	Press the “F4” key with the cursor in the Batch field to select and return a batch number	RFGEN will display a list of batches and when selected, the batch will be returned		
23	Press the “F4” key with the cursor in the Reason code field	RFGEN will display a list of reason codes		
24	Press the “F4” key with the cursor in the Reason code field to select and return a reason code	RFGEN will display a list of reason codes and when selected, the reason code will be returned		
25	At the RFGEN “Enter to Accept Prompt” the transaction is submitted	Confirm the Production Order Order Confirmation results		

## Overall Test Case Results

<b>Pass/Fail:</b>	
<b>Tester/Date:</b>	
<b>Re-Tester/Date:</b>	

<b>Actual Results:</b>	
------------------------	--

<b>Comments:</b>	
------------------	--