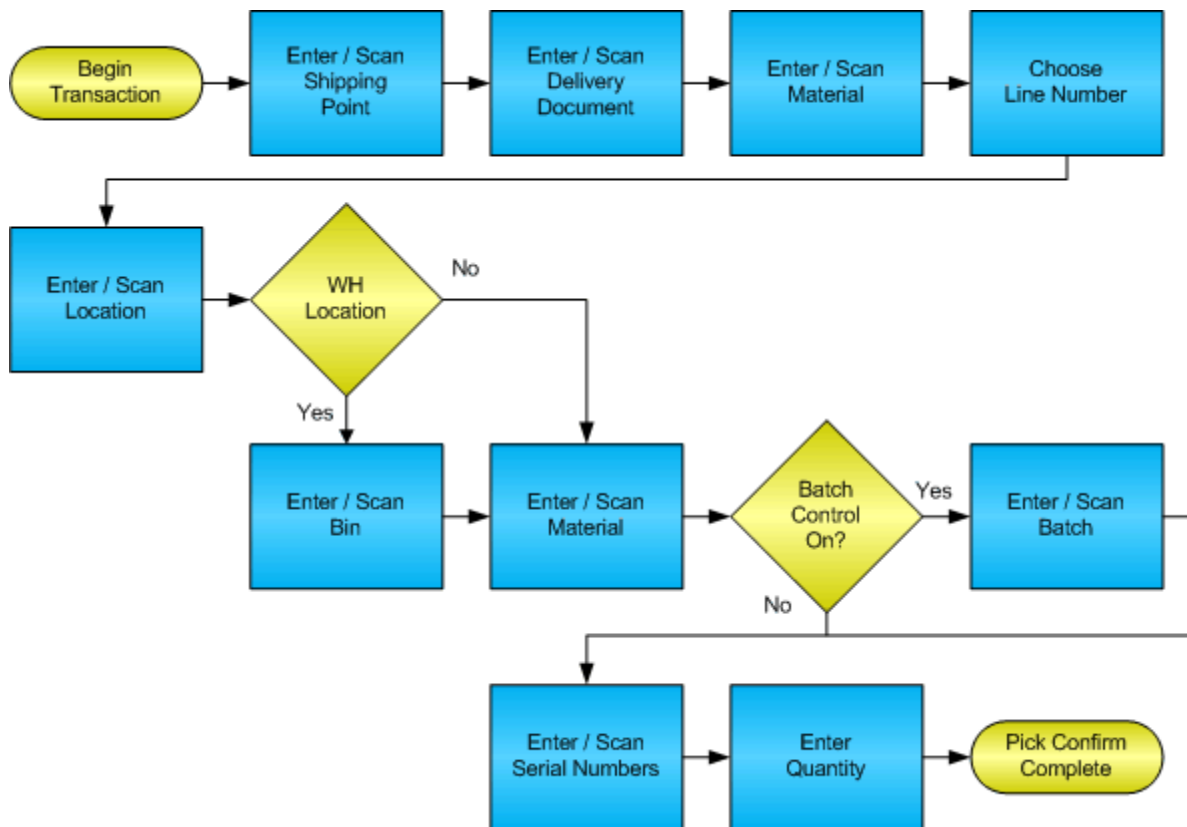


Sales Order Pick Confirmation w/ Serial Numbers



© The DataMAX Software Group Inc
1101 Investment Blvd., Suite 250
El Dorado Hills, CA 95762
(916) 939-4065

SAP® is registered trademark of SAP Corp.® and protected by national and international copyright laws.

License Agreement

All information contained in this document is **Copyright 2012, the DataMAX Software Group, Inc. and Others, All Rights Are Reserved by DataMAX.** This document may not be published, nor used without the prior written consent of DataMAX. **Use of the RFgen Software 'Open Source' code is at all times subject to the DataMAX Open Source Licensing Agreement,** which must be accepted at the time the source code is installed on your computer system. For your convenience, a text copy of the Open Source Licensing Agreement is also loaded (and may be printed from) your RFgen based system.

Requirements: RFgen Version 3.2.1.5 or later
RFgen SAP Integration Suite

Table of Contents

FSOPC0210 – SO Pick Confirmation w/ Serial Numbers.....2

- ✓ VALIDATIONS 2
- ✓ EDITS 3
- ⇨ FUNCTION KEYS 3
- CONSIDERATIONS 3

SAP Programs - Reference4

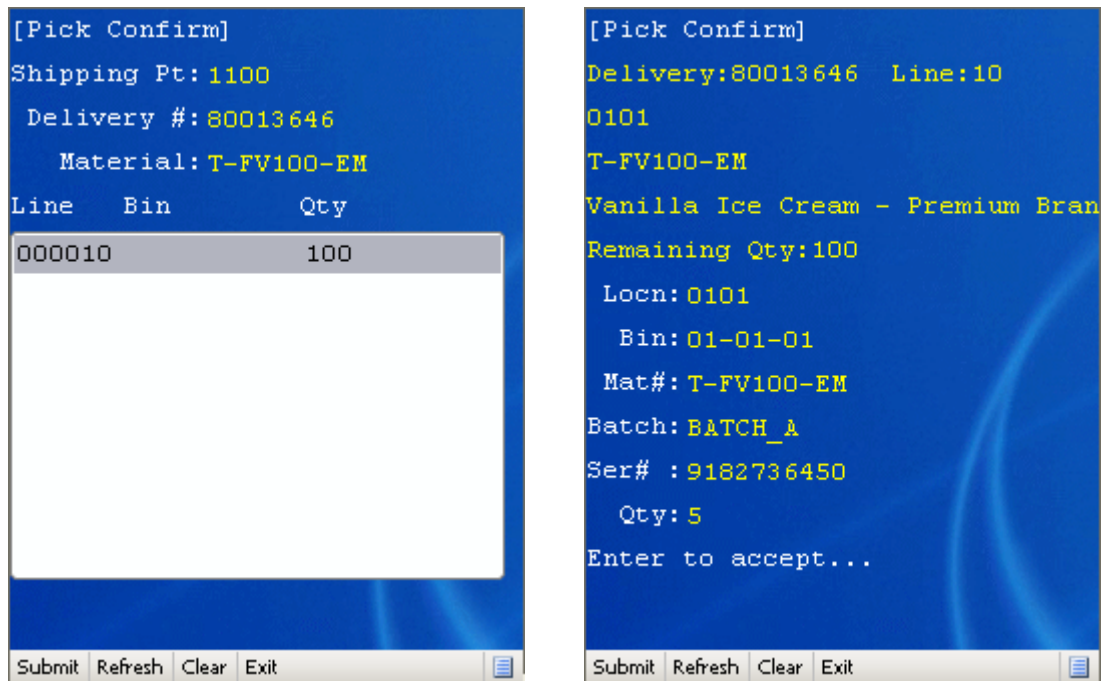
- SAP DELIVERY OVERVIEW: VL02N 4

Basic Test Script5

Test Script Description: SO Pick Confirmation w/ Serial Numbers6

- RFGEN INPUT REQUIREMENTS 6
- EXECUTION PROCEDURES..... 6
- OVERALL TEST CASE RESULTS 8

FSOPC0210 – SO Pick Confirmation w/ Serial Numbers



This transaction identifies the lines on a Delivery Document and displays the lines for the user to pull inventory from the appropriate locations. Additionally, it updates the status of the items so that pack confirmation, or ship confirmation transactions can occur. This transaction also supports warehouse locations.

This is a variation of the original Pick Confirm that is first narrowed down by Material number before showing the lines. Also the second page has a field for capturing Serial numbers with a counter of the number of serial numbers scanned or entered.

The following conditions apply to the RFgen implementation for the Pick Confirmation w/ Serial Numbers variation within the SAP environment.

Note: any of these parameters may be easily adjusted to meet the unique requirements of your company.

✓ Validations

Prompt	Method of Validation
Plant	T001W table
Delivery Document	LIKPUK table
Material	BAPI_MATERIAL_GET_DETAIL
Location	Must be the same as the displayed suggestion
Bin	Must be the same as the displayed suggestion
Material	Must be the same as the displayed suggestion
Batch	MCHB or LQUA
Serial	EQUI and JEST
Quantity	

✓ Edits

Condition	Special Circumstance
Default Branch Plant	User Defined
Quantity not greater than Quantity on Hand	
Quantity entered < = 0	

⇨ Function Keys

Key	Function
F3	Exit
F4	Search Data for Current Field
F8	Submit value for the Current Screen Display

Considerations

1. Does Plant default based on user?
2. Will negative quantities be processed?
3. Is batch control used for materials?

SAP Programs - Reference

SAP Delivery Overview: VL02N

Outbound deliv. 80007824 Document date 11/12/2002

Ship-to party 3010 Bush Distribution / 3000 North Avenue / Chicago IL 67980

Item overview Picking Loading Shipment Status overview Goods mov...

Picking date 11/12/2002 00:00 OvrllPickStatus A Not yet picked

Whse number 300 Lean warehouse No... OverallWMSStatus A WM Trnsf order reqd

Item	Material	PInt	SLoc	Delivery quantity	SU	Pick quantity	SU	Batch
10	M-12	3000	0001	1	PC	0	PC	

Batch split Main items All items

Basic Test Script

1. Record quantities on hand from the Item Ledger for the Plants, Materials and their associated batches and locations that you will perform the Pick Confirmation on.
2. Create and document the following scenarios:
 - a. Attempt to select a delivery document for pick confirmation that is not at the proper status. An error message should appear.
 - b. Attempt to transact on materials that are not set up in particular plants.
 - c. Select Delivery documents eligible for Ship Confirmation and process through RFgen. Test for over shipment of materials if allowed.
3. View the results using VL03N and see that the quantity on hand updated to the correct amounts on the processed transactions.

Test Script Description: SO Pick Confirmation w/ Serial Numbers

RFgen Input Requirements

Before you begin testing, ensure, for the combination of plant(s) and material(s) you will be testing, that the following is setup in SAP.

- a. Delivery Document
- b. Quantity Available
- c. Quantity On Hand
- d. An order activity status code for pick confirmation
- e. Serial Numbers

Execution Procedures

ID	Test Case	Expected Result	Pass	Fail
1	Type in a valid Plant _____ Press the ENTER key	RFGEN will validate and accept the plant entered.		
2	Type in a valid Delivery Document _____ Press the ENTER key	RFGEN will validate and accept the delivery document entered.		
3	Type in a valid Material _____ Press the ENTER key	RFGEN will validate and accept the material entered		
4	Type in a valid Location _____ Press the ENTER key	RFGEN will validate and accept the location entered based on the Delivery Document		
5	Type in a valid Bin _____ Press the ENTER key	RFGEN will validate and accept the location entered based on the Delivery Document		
6	Type in a valid Material _____ Press the ENTER key	RFGEN will validate and accept the location entered based on the Delivery Document		
7	Type in a valid Batch _____ Press the ENTER key	RFGEN will validate and accept the Batch entered		
8	Type in a valid Serial _____ Press the ENTER key	RFGEN will validate and accept the Serial entered		
9	Type in a valid order quantity _____	RFGEN will validate and accept the location entered based on the Delivery Document		
10	Type in an invalid Plant _____ Press the ENTER key	RFGEN will validate the Plant entered and display an error message – the field will continue to error out until corrected		
11	Type in an invalid Delivery Document _____ Press the ENTER key	RFGEN will validate the Delivery Document entered and display an error message – the field will continue to error out until corrected		
12	Type in an invalid Material _____	RFGEN will validate and display an error message – the field will continue to error out		

	Press the ENTER key	until corrected		
13	Type in an invalid Location _____ Press the ENTER key	RFGEN will validate and display an error message – the field will continue to error out until corrected. Validation is based on the Delivery Document		
14	Type in an invalid Bin _____ Press the ENTER key	RFGEN will validate and display an error message – the field will continue to error out until corrected. Validation is based on the Delivery Document		
15	Type in an invalid Material _____ Press the ENTER key	RFGEN will validate and display an error message – the field will continue to error out until corrected. Validation is based on the Delivery Document		
16	Type in an invalid Batch _____ Press the ENTER key	RFGEN will validate the Batch entered and display an error message – the field will continue to error out until corrected		
17	Type in an invalid Serial _____ Press the ENTER key	RFGEN will validate the Serial entered and display an error message – the field will continue to error out until corrected		
18	Type in an invalid order quantity _____	RFGEN will validate and display an error message – the field will continue to error out until corrected. Validation is based on the Delivery Document		
19	Press the “F4” key with the cursor in the plant field	RFGEN will display a list of plants		
20	Press the “F4” key with the cursor in the Delivery field	RFGEN will display a list of Delivery Documents		
21	Press the “F4” key with the cursor in the Material field	RFGEN will display a list of Materials		
22	At the RFGEN “Enter to Accept Prompt” the transaction is submitted	Confirm the pick confirmation results		

Overall Test Case Results

Pass/Fail:	
Tester/Date:	
Re-Tester/Date:	

Actual Results:	
------------------------	--

Comments:	
------------------	--