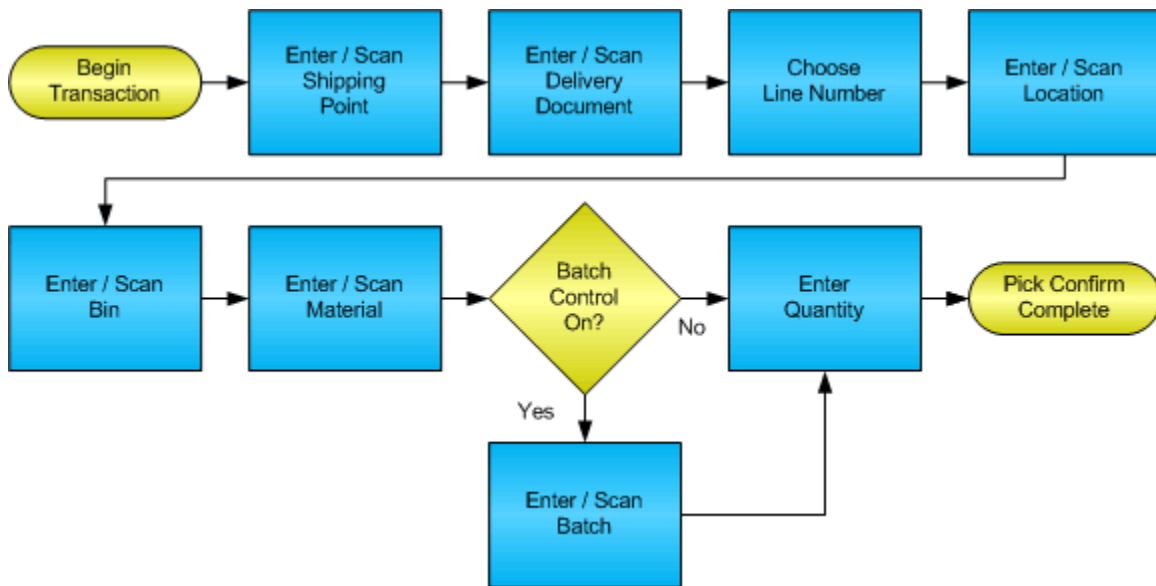


# Sales Order Pick Confirmation



© The DataMAX Software Group Inc  
1101 Investment Blvd., Suite 250  
El Dorado Hills, CA 95762  
(916) 939-4065

SAP® is registered trademark of SAP Corp.® and protected by national and international copyright laws.

# License Agreement

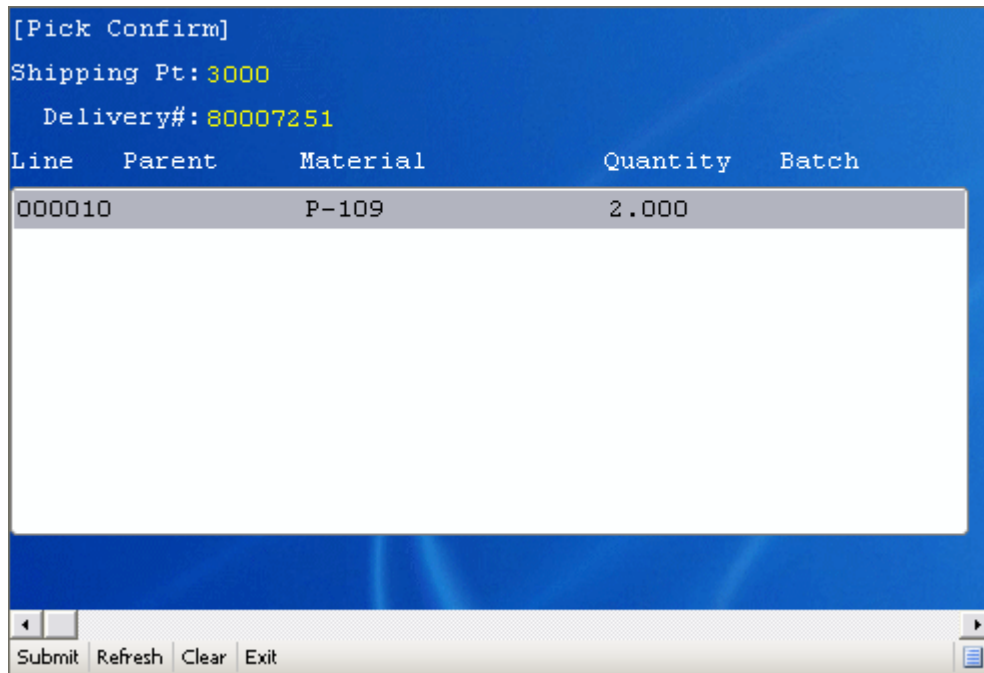
All information contained in this document is **Copyright 2012, the DataMAX Software Group, Inc. and Others, All Rights Are Reserved by DataMAX.** This document may not be published, nor used without the prior written consent of DataMAX. **Use of the RFgen Software 'Open Source' code is at all times subject to the DataMAX Open Source Licensing Agreement,** which must be accepted at the time the source code is installed on your computer system. For your convenience, a text copy of the Open Source Licensing Agreement is also loaded (and may be printed from) your RFgen based system.

Requirements:       RFgen Version 3.2.1.5 or later  
                      RFgen SAP Integration Suite

## Table of Contents

- FSOPC0200 – SO Pick Confirmation.....2**
- ✓ VALIDATIONS ..... 3
- ✓ EDITS ..... 3
- ⇨ FUNCTION KEYS ..... 3
- CONSIDERATIONS ..... 3
- SAP Programs - Reference .....4**
- SAP DELIVERY OVERVIEW: VL02N ..... 4
- Basic Test Script .....5**
- Test Script Description: SO Pick Confirmation .....6**
- RFGEN INPUT REQUIREMENTS ..... 6
- EXECUTION PROCEDURES..... 6
- OVERALL TEST CASE RESULTS ..... 7

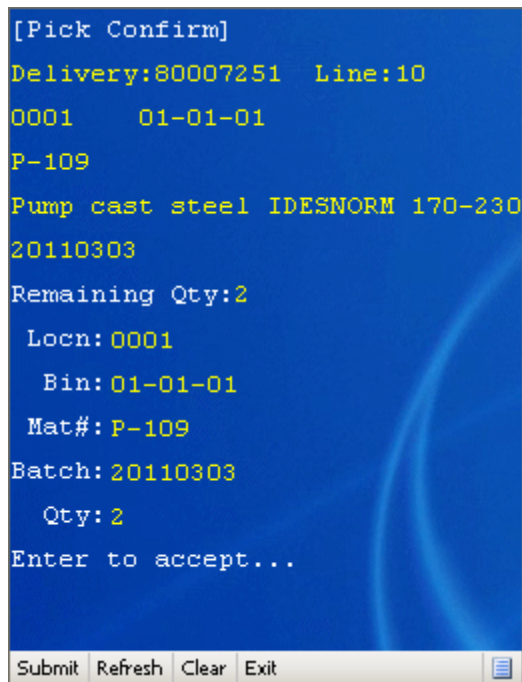
## FSOPC0200 – SO Pick Confirmation



[Pick Confirm]  
Shipping Pt: 3000  
Delivery#: 80007251

Line	Parent	Material	Quantity	Batch
000010		P-109	2.000	

Submit Refresh Clear Exit



[Pick Confirm]  
Delivery: 80007251 Line: 10  
0001 01-01-01  
P-109  
Pump cast steel IDESNORM 170-230  
20110303  
Remaining Qty: 2  
Locn: 0001  
Bin: 01-01-01  
Mat#: P-109  
Batch: 20110303  
Qty: 2  
Enter to accept...

Submit Refresh Clear Exit

This transaction identifies the lines on a Delivery Document and displays the lines for the user to pull inventory from the appropriate locations. Additionally, it updates the status of the items so that pack confirmation, or ship confirmation transactions can occur.

The following conditions apply to the RFgen implementation for the Pick Confirmation transaction within the SAP environment.

Note: any of these parameters may be easily adjusted to meet the unique requirements of your company.

### ✓ Validations

Prompt	Method of Validation
Plant	T001W table
Delivery Document	LIKPUK table
Location	Must be the same as the displayed suggestion
Bin	Must be the same as the displayed suggestion
Material	Must be the same as the displayed suggestion
Batch	Must be the same as the displayed suggestion if it exists
Quantity	

### ✓ Edits

Condition	Special Circumstance
Default Branch Plant	User Defined
Quantity not greater than Quantity on Hand	
Quantity entered < = 0	

### ⇄ Function Keys

Key	Function
F3	Exit
F4	Search Data for Current Field
F8	Submit value for the Current Screen Display

### Considerations

1. Does Plant default based on user?
2. Will negative quantities be processed?
3. Is batch control used for materials?

SAP Programs - Reference

SAP Delivery Overview: VL02N

**Delivery 80007824: Overview**

Outbound deliv. 80007824 Document date 11/12/2002  
 Ship-to party 3010 Bush Distribution / 3000 North Avenue / Chicago IL 67980

Item overview Picking Loading Shipment Status overview Goods mov...

Picking date 11/12/2002 00:00 OvrllPickStatus A Not yet picked  
 Whse number 300 Lean warehouse Ne... OverallWMSStatus A WM Trnsf order reqd

Item	Material	PInt	SLoc	Delivery quantity	SU	Pick quantity	SU	Batch
10	M-12	3000	0001	1	PC	0	PC	

Batch split Main items All items

## Basic Test Script

1. Record quantities on hand from the Item Ledger for the Plants, Materials and their associated batches and locations that you will perform the Pick Confirmation on.
2. Create and document the following scenarios:
  - a. Attempt to select a delivery document for pick confirmation that is not at the proper status. An error message should appear.
  - b. Attempt to transact on materials that are not set up in particular plants.
  - c. Select Delivery documents eligible for Ship Confirmation and process through RFgen. Test for over shipment of materials if allowed.
3. View the results using VL03N and see that the quantity on hand updated to the correct amounts on the processed transactions.

## Test Script Description: SO Pick Confirmation

### RFgen Input Requirements

Before you begin testing, ensure, for the combination of plant(s) and material(s) you will be testing, that the following is setup in SAP.

- a. Delivery Document
- b. Quantity Available
- c. Quantity On Hand
- d. An order activity status code for pick confirmation

### Execution Procedures

ID	Test Case	Expected Result	Pass	Fail
1	Type in a valid Plant _____ Press the <b>ENTER</b> key	RFGEN will validate and accept the plant entered.		
2	Type in a valid Delivery Document _____ Press the <b>ENTER</b> key	RFGEN will validate and accept the Delivery Document entered.		
3	Type in a valid location _____ Press the <b>ENTER</b> key	RFGEN will validate and accept the location entered		
4	Type in a valid Bin _____ Press the <b>ENTER</b> key	RFGEN will validate and accept the bin entered		
5	Type in a valid Material _____ Press the <b>ENTER</b> key	RFGEN will validate and accept the material entered		
6	Type in a valid order quantity _____	RFGEN will validate and accept the quantity entered		
7	Type in an invalid Plant _____ Press the <b>ENTER</b> key	RFGEN will validate the plant entered and display an error message – the field will continue to error out until corrected		
8	Type in an invalid location _____ Press the <b>ENTER</b> key	RFGEN will validate and display an error message – the field will continue to error out until corrected		
9	Type in an invalid Bin _____ Press the <b>ENTER</b> key	RFGEN will validate and display an error message – the field will continue to error out until corrected		
10	Type in an invalid Material _____ Press the <b>ENTER</b> key	RFGEN will validate and display an error message – the field will continue to error out until corrected		
11	Type in an invalid order quantity _____	RFGEN will validate and display an error message – the field will continue to error out until corrected		

12	Press the "F4" key with the cursor in the plant field	RFGEN will display a list of plants		
13	Press the "F4" key with the cursor in the plant field to select and return a plant to the plant field	RFGEN will display a list of plants and when selected, the plant will be returned		
14	Press the "F4" key with the cursor in the Delivery field	RFGEN will display a list of Delivery Documents		
15	At the RFGEN "Enter to Accept Prompt" the transaction is submitted	Confirm the pick confirmation results		

### Overall Test Case Results

<b>Pass/Fail:</b>	
<b>Tester/Date:</b>	
<b>Re-Tester/Date:</b>	

<b>Actual Results:</b>	
------------------------	--

<b>Comments:</b>	
------------------	--