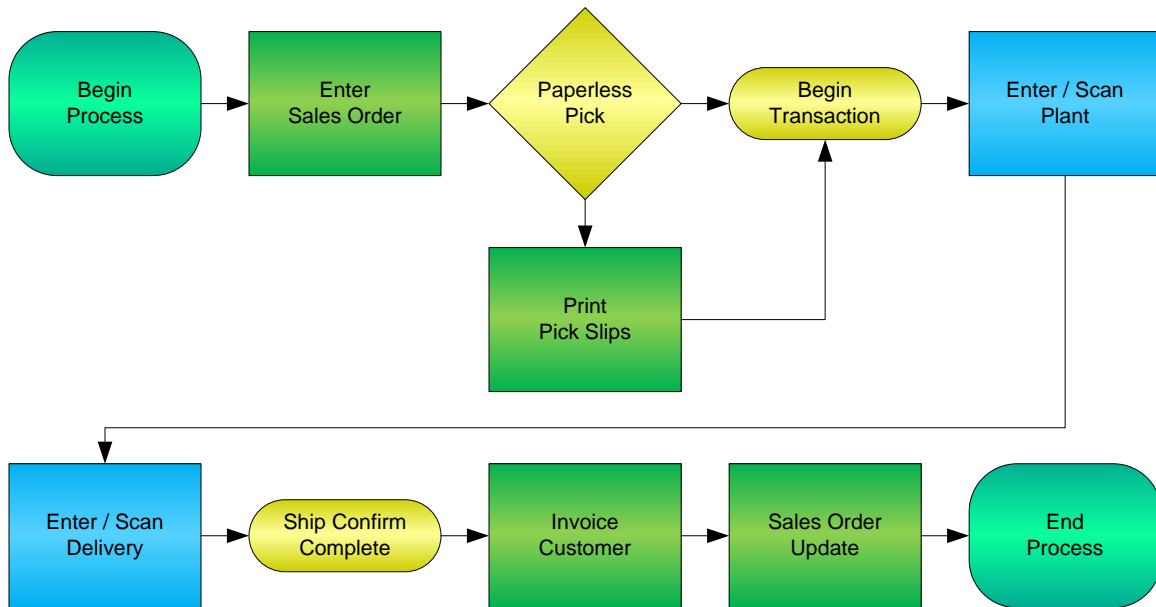


# Sales Order Ship Confirmation



© The DataMAX Software Group Inc  
1101 Investment Blvd., Suite 250  
El Dorado Hills, CA 95762  
(916) 939-4065

SAP® is registered trademark of SAP Corp.® and protected by national and international copyright laws.

License Agreement

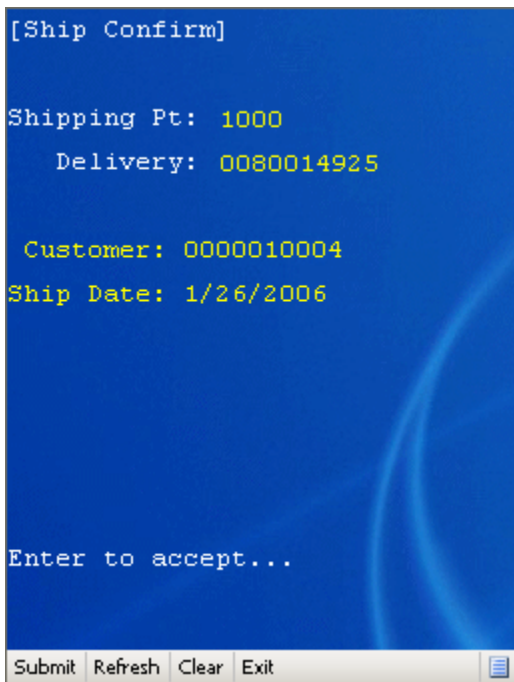
All information contained in this document is Copyright 2012, the DataMAX Software Group, Inc. and Others, All Rights Are Reserved by DataMAX. This document may not be published, nor used without the prior written consent of DataMAX. Use of the RFgen Software 'Open Source' code is at all times subject to the DataMAX Open Source Licensing Agreement, which must be accepted at the time the source code is installed on your computer system. For your convenience, a text copy of the Open Source Licensing Agreement is also loaded (and may be printed from) your RFgen based system.

Requirements: RFgen Version 3.2.1.5 or later
RFgen SAP Integration Suite

TABLE OF CONTENTS

FSOSC0200 – SO Ship Confirmation .....2
✓ VALIDATIONS ..... 2
✓ EDITS ..... 2
⇨ FUNCTION KEYS ..... 2
CONSIDERATIONS ..... 3
SAP Programs - Reference .....4
SAP DELIVERY OVERVIEW: VL02N ..... 4
Basic Test Script .....5
Test Script Description: SO Ship Confirmation .....6
RFGEN INPUT REQUIREMENTS ..... 6
EXECUTION PROCEDURES..... 6
OVERALL TEST CASE RESULTS ..... 7

## FSOSC0200 – SO Ship Confirmation



This transaction ship confirms an entire Delivery Document. At Ship Confirmation, the Delivery Document is updated, and inventory is relieved.

The following conditions apply to the RFgen implementation for the Ship Confirmation transaction within the SAP environment.

Note: any of these parameters may be easily adjusted to meet the unique requirements of your company.

### ✓ Validations

Prompt	Method of Validation
Plant	T001W table
Delivery document	LIKPUK table

### ✓ Edits

Condition	Table
Default Branch Plant	User Defined
Quantity not greater than Quantity on Hand	
Quantity entered <=0	

### ⇄ Function Keys

Key	Function
F3	Exit
F4	Search Data for Current Field
F8	Submit value for the Current Screen Display

## Considerations

1. Is the Plant set to default based on user?
2. Can ship confirm drive inventory negative?
3. Is batch control used?

SAP Programs - Reference

SAP Delivery Overview: VL02N

The screenshot shows the SAP VL02N 'Delivery Overview' screen. At the top, the title bar reads 'Outbound delivery Edit Goto Extras Environment Subsequent functions' with the SAP logo on the right. Below this is a toolbar with various icons. The main header area displays 'Delivery 80007824: Overview' and a 'Post goods issue' button. The data area shows 'Outbound deliv.' as 80007824 and 'Document date' as 11/12/2002. The 'Ship-to party' is 3010, with the address 'Bush Distribution / 3000 North Avenue / Chicago IL 67980'. A navigation bar includes tabs for 'Item overview', 'Picking', 'Loading', 'Shipment', 'Status overview', and 'Goods mov...'. Below the tabs, a summary section shows 'TransptnPlanng' as 11/12/2002 00:00, 'Route' as 000001, and 'Northern rou'. The 'Trns.plan.stat.' is 'A' with the note 'Open transp.planning'. A table titled 'All items' contains one row with the following data:

Item	Material	Gross weight	W...	Volume	VUn	Delivery quant
10	M-12	14	KG			1

Below the table is a toolbar with 'Batch split', 'Main items', and 'All items' buttons, and a scroll bar at the bottom.

## Basic Test Script

1. Record quantities on hand from the Item Ledger for the Plants, Materials and their associated batches and locations that you will perform the Ship Confirmation on.
2. Create and document the following scenarios:
  - a. Attempt to select a delivery document for ship confirmation that is not at the proper status. An error message should appear.
3. View the results using VL03N and see that the quantity on hand updated to the correct amounts on the processed transactions.

## Test Script Description: SO Ship Confirmation

### RFgen Input Requirements

Before you begin testing, ensure, for the combination of plant(s) and Delivery documents you will be testing, that the following is setup in SAP.

- a. Delivery document

### Execution Procedures

ID	Test Case	Expected Result	Pass	Fail
1	Type in a valid Plant _____ Press the <b>ENTER</b> key	RFGEN will validate and accept the plant entered.		
2	Type in a valid Delivery Document _____ Press the <b>ENTER</b> key	RFGEN will validate and accept the Delivery Document entered.		
3	Type in an invalid Plant _____ Press the <b>ENTER</b> key	RFGEN will validate the plant entered and display an error message – the field will continue to error out until corrected		
4	Type in an invalid Delivery Document _____ Press the <b>ENTER</b> key	RFGEN will validate and display an error message – the field will continue to error out until corrected		
5	Press the “F4” key with the cursor in the plant field	RFGEN will display a list of plants		
6	Press the “F4” key with the cursor in the plant field to select and return a plant to the plant field	RFGEN will display a list of plants and when selected, the plant will be returned		
7	Press the “F4” key with the cursor in the Delivery Document field	RFGEN will display a list of Delivery Documents		
8	At the RFGEN “Enter to Accept Prompt” the transaction is submitted	Confirm the ship confirmation results		

## Overall Test Case Results

<b>Pass/Fail:</b>	
<b>Tester/Date:</b>	
<b>Re-Tester/Date:</b>	

<b>Actual Results:</b>	
------------------------	--

<b>Comments:</b>	
------------------	--