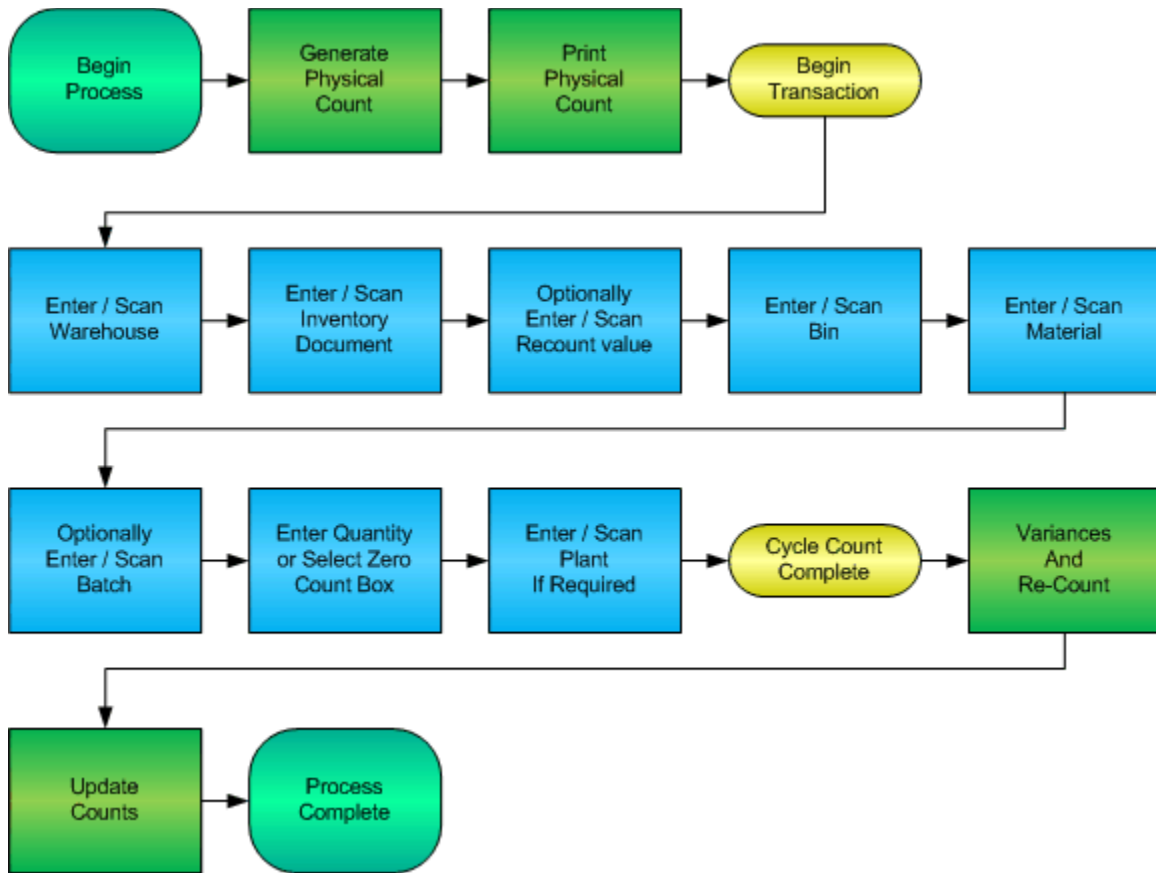


Warehouse Cycle Count



© The DataMAX Software Group Inc
1101 Investment Blvd., Suite 250
El Dorado Hills, CA 95762
(916) 939-4065

SAP® is registered trademark of SAP Corp.® and protected by national and international copyright laws.

License Agreement

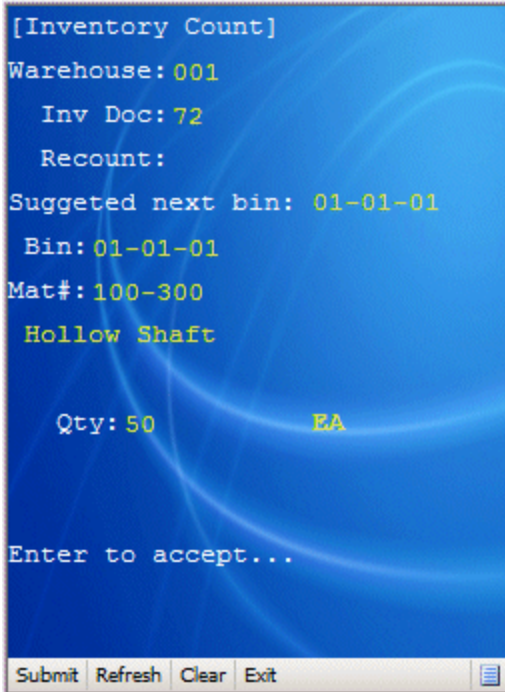
All information contained in this document is **Copyright 2012, the DataMAX Software Group, Inc. and Others, All Rights Are Reserved by DataMAX.** This document may not be published, nor used without the prior written consent of DataMAX. **Use of the RFgen Software 'Open Source' code is at all times subject to the DataMAX Open Source Licensing Agreement,** which must be accepted at the time the source code is installed on your computer system. For your convenience, a text copy of the Open Source Licensing Agreement is also loaded (and may be printed from) your RFgen based system.

Requirements: RFgen Version 3.2.1.5 or later
 RFgen SAP Integration Suite

Table of Contents

- FIMCC0210 – CYCLE COUNT (WH) 2**
 - ✓ VALIDATIONS 2
 - ✓ EDITS 2
 - ⇄ FUNCTION KEYS 2
 - CONSIDERATIONS 3
- SAP PROGRAMS - REFERENCE 4**
 - SAP CYCLE COUNT: LI11N 4
 - SETUP AN RFGEN MENU 6
- BASIC TEST SCRIPT 7**
- TEST SCRIPT DESCRIPTION: WAREHOUSE CYCLE COUNT 8**
 - RFGEN INPUT REQUIREMENTS 8
 - EXECUTION PROCEDURES..... 8
 - OVERALL TEST CASE RESULTS 10

FIMCC0210 – Cycle Count (WH)



This Cycle Count variation allows for re-counts in the warehouse cycle count module and suggests the next bin to move to as all items within a bin are counted. Before the quantity is filled in a check box is available that when checked will record that the current item has a zero count in an effort to save time. If the Cycle Count document and the warehouse location do not specify the Plant value, it will be requested from the user at the end.

This transaction also internally keeps track of Cycle Count document-locking so that only one user can be counting any particular document.

The following conditions apply to the RFgen implementation for this Cycle Count variation within the SAP environment.

Note: any of these parameters may be easily adjusted to meet the unique requirements of your company.

✓ Validations

Prompt	Method of Validation
Warehouse	Not Validated
Inventory Document	LINK table with Status in I or A
Recount	LINV
Bin	LAGP
Material	BAPI_MATERIAL_GETLIST and must be in Cycle Count
Batch	Validated against the Cycle Count document
Quantity	Numeric and non-negative
Plant	T001W

✓ Edits

Condition	Special Circumstance
Default Branch Plant	User Defined
Quantity entered < 0	

⇌ Function Keys

Key	Function
F3	Exit
F4	Search Data for Current Field
F8	Submit value for the Current Screen Display

Considerations

1. Does Plant default based on user?
2. Will you allow a count of 0?
3. Is a prompt needed indicating that the Cycle Count has a variance from the current quantity on hand?

SAP Programs - Reference

SAP Cycle Count: LI11N

Inventory count Edit Goto Extras Environment System Help

Enter Inventory Count: Initial Screen

Overview New item Single record entry

Warehouse Number 101
Inventory record 173
Recount version
Count date 02/06/2008
Name of counter wguenther.t

Positioning
Inventory page
Inventory item
Storage Bin

Recount 02 for inventory number 173 does not exist

LI11N TC01E3P7 OVR

Inventory count | Edit | Goto | Extras | Environment | System | Help

Enter Inventory Count: Overview

New item | Single record entry

Warehouse No.: 101 PWE Central Warehouse
 Storage Type: 001 Fixed Bin Storage
 Inventory rec.: 173
 Count date: 02/06/2008

Item	Stor. Bin	Material	Batch	Plant	S	Counted quantity	AU	Z	Quant	Storage Unit	S	Name of counter
1	C092501	10001350		2001					2412			WGUENTHERT

LI11N TC01E3P7 OVR

Inventory count | Edit | Goto | Extras | Environment | System | Help

Enter Inventory Count: Process Single Result

New entry

Warehouse No.: 101 PWE Central Warehouse
 Storage Type: 001 Fixed Bin Storage
 Inventory rec.: 173
 Count date: 02/06/2008

General data

Inventory item: 1
 Storage Bin: C092501
 Quant: 2412
 Name of counter: WGUENTHERT
 Stor. Unit Type:

Material

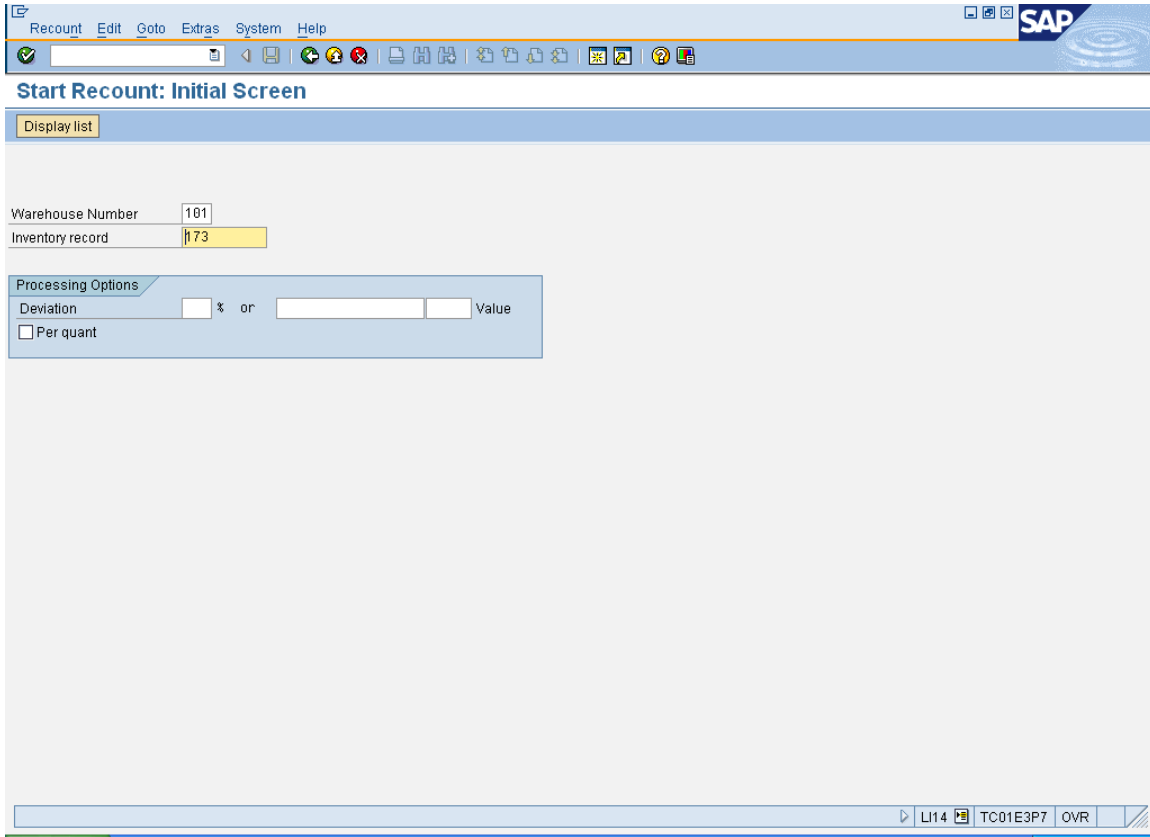
Material: 10001350
 Plant: 2001
 Batch:
 Stock Category:
 Special Stock:

Counted results

Counted qty: 1 EA
 Zero stock
 GR Date: 06/24/2006
 ShLife Exp.Date:

Difference compared to book quantity - 97.78 %

LI11N TC01E3P7 OVR



Setup an RFgen Menu

To implement this RFgen Form, no parameters are required.

Form/Menu	Description to Display
FIMCC0210	Cyle Count

Basic Test Script

1. Set up the Cycle Count Program in SAP and select materials to be counted.
2. Record quantities on hand from the Ledger for the Plants, Material Numbers and their associated batches and locations that you will perform Cycle Counts on.
3. Create and document the following scenarios:
 - a. Enter a count of 0. If your customization disallows for a count of 0, an error should appear.
 - b. Enter a negative amount. If negative counts are not allowed, an error should appear.
 - c. Enter Quantities on Hand that differs from the current quantity on hand for an item. If your customization requires a second count, or a notification that there is a variance from the current quantity on hand, the appropriate messages should appear.
4. After completing the Cycle Count verify that the Cycle Count Status has updated.
5. Approve and update the Cycle Count, then verify that the quantities were updated.

Test Script Description: Warehouse Cycle Count

RFgen Input Requirements

Before you begin testing, ensure, for the combination of plant(s) and material(s) you will be testing, that the following is setup in SAP.

- a. Material
- b. Material Locations
- c. Cycle Count Documents

Execution Procedures

ID	Test Case	Expected Result	Pass	Fail
1	Type in a valid Warehouse _____ Press the ENTER key	RFGEN will validate and accept the warehouse entered.		
2	Type in a valid Inv Document _____ Press the ENTER key	RFGEN will validate and accept the Inv Document entered.		
3	Optionally Enter a Recount value. This only applies if an Inv Doc is reused. _____ Press the ENTER key	RFGEN will validate and accept the Recount number entered.		
4	Type in a valid Bin _____ Press the ENTER key	RFGEN will validate and accept the Bin as well as display the unique Bin Type. If there are more than one Bin Type, the user is prompted for the Bin Type		
5	Type in a valid material _____ Press the ENTER key	RFGEN will validate and accept the material entered.		
6	Type in a valid Batch _____ Press the ENTER key	RFGEN will validate and accept the batch value entered.		
7	Type in a valid Quantity _____ Press the ENTER key	RFGEN will validate and accept the quantity entered.		
8	For a Zero count check the Zero checkbox option	This will default the quantity field to 0 and advance the prompt focus.		
9	Type in an valid Plant _____ Press the ENTER key	RFGEN will validate and accept the plant entered.		
10	Type in an invalid Warehouse _____ Press the ENTER key	RFGEN will validate the plant entered and display an error message – the field will continue to error out until corrected		
11	Type in an invalid Inv Document _____ Press the ENTER key	RFGEN will validate and display an error message – the field will continue to error out until corrected		
12	Enter an invalid Recount value. _____ Press the ENTER key	RFGEN will validate and display an error message – the field will continue to error out until corrected		

13	Type in an invalid Bin _____ Press the ENTER key	RFGEN will validate and display an error message – the field will continue to error out until corrected		
14	Type in an invalid material _____ Press the ENTER key	RFGEN will validate and display an error message – the field will continue to error out until corrected		
15	Type in an invalid Batch _____ Press the ENTER key	RFGEN will validate and display an error message – the field will continue to error out until corrected		
16	Type in an invalid Quantity _____ Press the ENTER key	RFGEN will validate and display an error message – the field will continue to error out until corrected		
17	Type in an invalid Plant _____ Press the ENTER key	RFGEN will validate and display an error message – the field will continue to error out until corrected		
18	Press the “F4” key with the cursor in the Warehouse field	RFGEN will display a list of warehouses		
19	Press the “F4” key with the cursor in the Inv Doc field	RFGEN will return a list available cycle count documents		
20	Press the “F4” key with the cursor in the Material field	RFGEN will display a list of materials available for cycle counting. Previously counted materials will have an asterisk.		
21	Press the “F4” key with the cursor in the Batch field	RFGEN will display a list of batches available for the material.		
22	Press the “F4” key with the cursor in the Plant field	RFGEN will display a list of plants available for the Inventory Document.		
23	If an item has not been selected for cycle count Cycle# _____ Material _____ Qty _____	RFGEN will disallow the item and display an error message		
24	If an item has been selected for cycle count Cycle# _____ Material _____ Qty _____	RFGEN will process the cycle count and advance the cycle count status		
25	At the RFGEN “Enter to Accept Prompt” the transaction is submitted to SAP	Confirm the cycle count results		

Overall Test Case Results

Pass/Fail:	
Tester/Date:	
Re-Tester/Date:	

Actual Results:	
------------------------	--

Comments:	
------------------	--